

Tour code:

**BTa14****2022**

Guaranteed departures

Small group safari maximum: **12 travellers**

Travel through:

**Botswana & South Africa & Zimbabwe**

Safari length:

**14 days**

## BOTSWANA WILD PARKS

Botswana is considered Southern Africa's premier game viewing destination. Get the best wilderness experience in Southern Africa by bush walk, game drive and even by dug-out canoe. Cruise past hippos in the Okavango Delta and watch thirsty elephants at the river in Chobe National Park. End with a very grand finale Victoria Falls.

**DEPARTS:** JOHANNESBURG on Sunday at 06:30am**ENDS:** VICTORIA FALLS on Saturday at +/-08:00am

### Highlights

- \* Khama Rhino Sanctuary – game viewing
- \* Okavango Delta – mokoro trail and bush walks
- \* Moremi Game Reserve – 3 day 4WD game viewing
- \* Chobe – 4WD game viewing & river cruise
- \* Victoria Falls – adventure activities



## SAFARI GRADE: ACCOMMODATED

**The BTa14 Johannesburg start** saves you the cost of flights to Maun and includes an opportunity to see rhino.

**The BTa13 Maun start** clients join the BTa14 group in Maun on day 2 eliminating the drive Jo'burg to Maun.

**Overnight** all 13 nights' accommodation in lodges, chalets and tented camps. Of which, 10 nights on safari we stay at small and intimate lodges, with en suite facilities.

1 night in Khama is in self-catering chalets where two bedrooms share a bathroom.

2 nights tented camp in the Okavango. Each tent has twin camp beds with linen and en suite chemical toilet. Shared bucket shower tent with hot water off the fire.

**Meals** 13 breakfasts, 11 lunches and 6 dinners are included. Of which 9 breakfasts, 3 lunches & 3 dinners are provided by the lodges. The remaining included meals are provided by the Sunway crew, prepared at the vehicle and eaten around the campfire.

**Transport** for the majority of this safari you travel in a custom-built Sunway Safari truck with 12 forward facing seats; or (on 10% of tours) Mercedes Sprinter minibuses with 12 forward facing seats and air conditioning. For the game drives in Moremi and Chobe and the transfer into the Okavango we use open sided 4WD vehicles with local guides.

**Limited participation** an essential part of your safari is some participation. From carrying your own bag to cleaning your window and packing the truck in the morning – it's all part of your adventure and when everyone puts in a little effort the trip will run smoothly. Where the tour leaders provide meals, we ask that clients help (on rotation) with the washing up.



## Day 1 JOHANNESBURG to KHAMA RHINO SANCTUARY [chalets - LD]


(B=breakfast, L=lunch D=dinner)

Departing Johannesburg at 06:30am we head north into Botswana and the Khama Rhino Sanctuary. The Khama Rhino Sanctuary Trust is a community based wildlife project established in 1992 to assist in saving the vanishing rhino, restore an area formerly teeming with wildlife to its previous natural state and provide economic benefits to the local Botswana community through tourism and the sustainable use of natural resources. This reserve situated on the Kalahari sandveld, has several natural waterholes and provides prime habitat for white rhino, zebra and wildebeest.

*Day 1: Breakfast is not included*

*Day 1: Lunch provided by tour leaders with the help of the group*

*Day 1: Dinner provided tour leaders with the help of the group*

- Includes:** Entrance fees to Khama Rhino Sanctuary & afternoon game drive
- Distance/time:** ±650km, 7h30 actual driving time, so with a border crossing and lunch stop we expect a total travel day of ±9h30. This is a long travel day for us to a special overnight stop.
- Overnight:** [Khama Rhino Sanctuary](#), 2 twin share bedrooms in each chalet with 1 bathroom shared between 2 rooms. WiFi not available. 



Khama Rhino Sanctuary Trust is a key project for rhino conservation in Botswana, assisting in the management and breeding of rhino for redistribution of animals throughout Botswana. 100% Motswana staff are led by the chief warden and all profit made from this initiative goes towards the Serowe, Mabelepodu & Paje communities for development.




## Day 2 MAUN [lodge BL-]

We drive through the Kalahari to Maun, the gateway to the Okavango Delta. Since Maun's founding in 1915 as the capital of the Batawana people, it has had a reputation as a hard living 'Wild West' town helping the local cattle ranching and safari operations. The name Maun is derived from the San word 'maung', which translates 'the place of short reeds'.

*Day 2: Breakfast provided tour leaders with the help of the group*

*Day 2: Lunch provided by tour leaders with the help of the group*

*Day 2: Dinner will be an own expense meal at a local restaurant*

- Includes:** -
- Distance/time:** ±520km, 6h30 actual driving time. We leave Khama relatively early to arrive in Maun midday to shop for delta supplies, so expect a travel day of ±8h00.
- Optional Activities** Scenic flight over the Okavango Delta (+/-USD95-120) pp depending on number of people in each aircraft)
- Overnight:** [Island Safari Lodge](#), chalet - twin share bedrooms with en suite facilities. Swimming pool, bar, restaurant, telephone. WiFi available. 



Island Safari Lodge is Motswana owner- managed and the lodge employs 22 Motswanans. They support various Maun based organisations including Rhino Conservation Botswana, Career Dreams Training Institute and the Junior Rangers Program. The lodge separates all recyclables as well as educating visitors on water conservation. The restaurant serves you Botswana beef!



### Day 3 - 4 **OKAVANGO DELTA** [tented camp x2 BLD]

We drive into the Okavango Delta to the launch station where we board our mekoro's and pole to our tented camp in the heart of the largest inland delta in the world. This amazing environment has large numbers of red lechwe, buffalo, elephant and birds, particularly kingfishers! One of the best experiences in the Okavango Delta is to be poled along reed-lined channels in a mokoro (dug-out canoe). Sit back and relax as the water gurgles gently under the mokoro while your skilled poler points out the fauna and flora.

*Day 3: Breakfast provided by the lodge*

*Day 3: Lunch provided by tour leaders with the help of the group*

*Day 3: Dinner provided by tour leaders with the help of the group*

*Day 4: Breakfast provided by tour leaders with the help of the group*

*Day 4: Lunch provided by tour leaders with the help of the group*

*Day 4: Dinner provided by tour leaders with the help of the group*

**Includes:** Entrance fees to the Okavango Delta, morning & afternoon game walks with local guides  
**Distance/time:** ±50km, 2h00 actual driving time to mekoro station. Mokoro ride to camp is dependent on campsite location so overall travel time for the day ±6h30.  
**Overnight:** **Wilderness tented camping** - 2 nights tented camp in the Okavango. Each tent has twin camp beds with linen and an en suite chemical toilet. Shared bucket shower tent with hot water off the fire. Tents have built-in insect nets. We need to take our own water and all equipment. Wild tented camping can be very enjoyable but please remember that we leave no trace of our stay and take all rubbish away with us. The wilderness tented camp supplies all linen blankets and pillows. The camp chairs have a backrest. You will need to bring your own towel. WiFi not available. 🏠



The Okavango Kopano Mokoro Community Trust is run by the communities on the south eastern sector of the Okavango Delta with entrance and camping fees paid to the trust, and wages paid directly to the individual guides/polers. Work is split between community members on a rotation basis administered by each village. By working with these communities, we help provide sustainable economic benefit for the conservation of the area. Please also see the Sunway SOS Save Our Sausage Trees project.



### Day 5, 6, 7, 8 **MOREMI** [3x tented bush lodge BLD, 1x lodge BL-]

We take an open 4WD into Moremi Game Reserve for fantastic game viewing! Chief's Island is the largest landmass within Moremi and was the Batswana tribe's richest hunting ground, before being declared a game reserve by the tribe. We spend 4 days on game drives watching the abundant wildlife including elephant, hippo, buffalo, lion & other game, both in Moremi Game Reserve and in private concession reserves surrounding the park. We return to Maun midday on day 8 for an evening restaurant meal (own expense).

*Day 5: Breakfast provided by tour leaders with the help of the group*

*Day 5: Lunch provided by tour leaders with the help of the group*

*Day 5: Dinner will be a set meal provided by the lodge*

*Day 6, 7: Breakfast will be provided by the lodge*

*Day 6, 7: Lunch provided by tour leaders with the help of the group*

*Day 6, 7: Dinner will be a set meal provided by the lodge*

*Day 8: Breakfast will be provided by the lodge*

*Day 8: Lunch provided by tour leaders with the help of the group*

*Day 8: Dinner will be an own expense meal at a local restaurant*

**Includes:** Entrance fees to Moremi Game Reserve, morning & afternoon game drives in an open 4WD vehicle.

**Distance/time:** ±150km, 4h00 actual driving time but it's a rough 4x4 route, and with a mokoro ride start, lunch stop and game viewing en-route we expect a full travel day of ±10h00 subject to sunset time.

**Optional Activities** Scenic flight over the Okavango Delta (+/-USD95-120) pp depending on the number of people in each aircraft).

**Overnight:** 3x nights Elephant Pools Lodge – exclusive private tented bush lodge in Khwai Private Reserve, bordering Moremi Game Reserve. Twin-share permanent tented lodge with en-suite facilities. WiFi not available. 🏠

1x night Maun [Island Safari Lodge](#), chalet - twin share bedrooms with en suite facilities. Swimming pool, bar, restaurant, telephone. WiFi not available. 🏠



### Day 9 **MAKGADIKGADI PANS** [tented lodge or chalets BL -]

We have time for an optional game flight over the Okavango before we head to Nata (own expense). The shimmering salt pans of Makgadikgadi appear as a glaring white, endless plain. When the rain comes a dramatic change takes place as thousands of wildebeest and zebra migrate to the sweet nutritious grasslands and clouds of flamingo feed in its algae rich waters. It is an area of low rainfall, so this spectacle only lasts a short while. **(Please note due to high rainfall in the area over the last few years that there is water in the section of the pans we visit)**

*Day 9: Breakfast provided by the lodge*

*Day 9: Lunch provided by tour leaders with the help of the group*

*Day 9: Dinner will be an own expense meal*

**Includes:** Entrance fees into Makgadikgadi Pans

**Distance/time:** ±320km, 4h00 actual driving time. It's a relatively flat, straight road so with stops and lunch the total travel for the day is ±5h00.

**Overnight:** [Nata Lodge](#) – twin share luxury tents with en suite facilities. Swimming pool, bar, restaurant, telephone. (or [Pelican Lodge](#), – Chalets with en suite facilities). WiFi not available. 🏠



### Day 10 – 11 **CHOBE NATIONAL PARK** [lodge BL -]

The Chobe River is a stunning feature of Botswana and will be the focus of our lodge stay. The Chobe River flows lazily along the northern boundary of the Chobe National Park attracting some of the largest herds of elephant in Africa. An Early morning 4WD game drive in the Chobe National Park and an afternoon game viewing "sundowner" cruise to see the mighty elephant herds return to the Chobe River to quench their thirst.

*Day 10: Breakfast provided by tour leaders with the help of the group*

*Day 11: Breakfast provided by the lodge*


*Day 10, 11: Lunch provided by tour leaders with the help of the group*

*Day 10, 11: Dinner will be an own expense meal*

**Includes:** Entrance fees to Chobe National Park, morning game drive (day 11), sunset boat cruise (day 11)

**Distance/time:** ±300km, 4h00 actual driving time. We leave early and aim for a midday arrival with total travel for the day of ±4h30.

**Optional Activities** Afternoon game drive in an open 4WD vehicle (on day 10)

**Overnight:** [Thebe River Safaris](#) – twin room with en suite facilities. Swimming pool, bar, restaurant, telephone. WiFi available 



Thebe River Safaris employs 89 Motswana staff and is Motswana owned and operated. The lodge grows their own vegetables and sources other products locally, all waste is recycled. Although the lodge is situated along a river, visitors are asked to conserve water where possible and LED lights are used throughout the property to conserve energy.



### **Day 12 – 13 VICTORIA FALLS, ZIMBABWE** [hotel Bx2 - -]

We visit “Mosi oa Tunya” or “the smoke that thunders” - Victoria Falls. These magnificent falls are one of the seven natural wonders of the world. A rich and fertile rain forest, fed by the spray or “smoke”, surrounds the falls attracting colourful birdlife. Opportunities to white water raft on the mighty Zambezi River, bungi jump, or take a “flight of angels” (own expense).

*Day 12: Breakfast provided by the lodge*

*Day 12: Lunch will be an own expense meal*

*Day 12: Dinner will be an own expense meal*

*Day 13: Breakfast provided by the hotel*


*Day 13: Lunch will be an own expense meal*

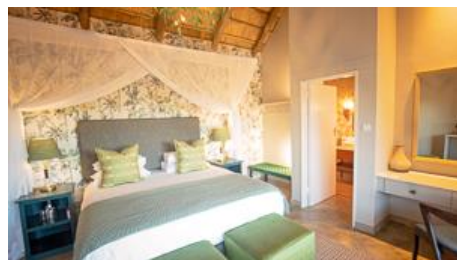
*Day 13: Dinner will be an own expense meal*

**Includes:** Entrance to see the Victoria Falls

**Distance/time:** ±70km, 1h00 actual driving time. It's not a long way, but the border can be busy and slow, so we anticipate a total travel day of ±3h00.

**Optional Activities** White water rafting, sunset cruises, scenic flights & many more

**Overnight:** [Shearwater Explorers Village](#), twin rooms with en-suite facilities. Swimming pool, restaurant, bar and telephone. Free WiFi available. 



### **Day 14 VICTORIA FALLS, ZIMBABWE – TOUR ENDS** [- B - -]

Tour ends after breakfast at 08:00am.

*Day 14: Breakfast provided by the hotel*

*Day 14: NA*

*Day 14: NA*

**Includes:** N/A

**Distance/time:** N/A

**Overnight:** N/A

#### **Please note:**

The distance and travel times quoted above are an estimate only and subject to local road conditions

#### **Please note:**

That the accommodation specified above and in the itinerary is a guide only and is subject to availability. Alternatives will be of a similar standard, and accommodation changes will be made without notice.

#### **Sustainable Tourism:**

Botswana conservation lands surrounding the national parks are leased by the government to tourism businesses for the benefit of the local communities. The lodge we use outside Moremi not only employs staff from the local village but also contributes financially towards the community trust. The village board use that income for the betterment of the local people. The lease environmental management plan is the benefit of conservation of the region.

## 2022 PRICES AND DEPARTURE DATES:

**RACK Price:** (valid Jan 2022 – Dec 2022)

**BTa14 € 2 740 pps + local payment of US\$ 300**

**Single supplement: € 590 pp** (If you are traveling on your own, Sunway will "room" you with another same gender client. You do not pay extra when booking as a single person. If, however you request a single room, then you'll pay the single supplement.)

### 2022 DEPARTURE DATES

**BTa14** Botswana Wild Parks

Departs	Ends	
JOHANNESBURG	VICTORIA FALLS, ZIMBABWE	
Sunday	Saturday	
06:30am	08:00am	



02-Jan-22	15-Jan-22	
16-Jan-22	29-Jan-22	
30-Jan-22	12-Feb-22	NBa
13-Feb-22	26-Feb-22	German
20-Feb-22	05-Mar-22	
27-Feb-22	12-Mar-22	
06-Mar-22	19-Mar-22	NBa
20-Mar-22	02-Apr-22	NBa
27-Mar-22	09-Apr-22	NBa
03-Apr-22	16-Apr-22	
<b>10-Apr-22</b>	<b>23-Apr-22</b>	
10-Apr-22	23-Apr-22	German
17-Apr-22	30-Apr-22	
24-Apr-22	07-May-22	German / NBa
<b>01-May-22</b>	<b>14-May-22</b>	
08-May-22	21-May-22	NBa
15-May-22	28-May-22	
22-May-22	04-Jun-22	NBa
<b>29-May-22</b>	<b>11-Jun-22</b>	
05-Jun-22	18-Jun-22	NBa
12-Jun-22	25-Jun-22	NBa
19-Jun-22	02-Jul-22	NBa
<b>26-Jun-22</b>	<b>09-Jul-22</b>	NBa
<b>03-Jul-22</b>	<b>16-Jul-22</b>	NBa
<b>10-Jul-22</b>	<b>23-Jul-22</b>	NBa
<b>17-Jul-22</b>	<b>30-Jul-22</b>	NBa
<b>24-Jul-22</b>	<b>06-Aug-22</b>	German / NBag
<b>31-Jul-22</b>	<b>13-Aug-22</b>	NBa
<b>07-Aug-22</b>	<b>20-Aug-22</b>	NBa
<b>14-Aug-22</b>	<b>27-Aug-22</b>	German / NBag
<b>21-Aug-22</b>	<b>03-Sep-22</b>	NBa
<b>28-Aug-22</b>	<b>10-Sep-22</b>	NBa
<b>04-Sep-22</b>	<b>17-Sep-22</b>	German / NBag
<b>11-Sep-22</b>	<b>24-Sep-22</b>	NBa
<b>18-Sep-22</b>	<b>01-Oct-22</b>	NBa
<b>25-Sep-22</b>	<b>08-Oct-22</b>	German / NBag
<b>02-Oct-22</b>	<b>15-Oct-22</b>	NBa
<b>09-Oct-22</b>	<b>22-Oct-22</b>	NBa
<b>16-Oct-22</b>	<b>29-Oct-22</b>	NBa
<b>23-Oct-22</b>	<b>05-Nov-22</b>	NBa
<b>30-Oct-22</b>	<b>12-Nov-22</b>	NBa
<b>06-Nov-22</b>	<b>19-Nov-22</b>	
<b>13-Nov-22</b>	<b>26-Nov-22</b>	German / NBag
<b>20-Nov-22</b>	<b>03-Dec-22</b>	
<b>27-Nov-22</b>	<b>10-Dec-22</b>	NBa
<b>04-Dec-22</b>	<b>17-Dec-22</b>	

11-Dec-22	24-Dec-22	NBa
18-Dec-22	31-Dec-22	
25-Dec-22	07-Jan-23	

- \* **Bold dates** are guaranteed departures; all other dates are guaranteed from 4 clients.
- \* **German:** These tours are led by a German speaking translator/tour leader.
- \* **NBa:** These tours can be combined with a Livingstone – Livingstone Namibia Botswana Southern Circle 21day accommodated safari to create an awesome safari that visits the highlights of Botswana & Namibia.

**BTa14** Johannesburg to Victoria Falls, Zimbabwe

**€ 2 740 pps + local payment of US\$ 300**

Single supplement: € 590 pp

**BTa13** Maun to Victoria Falls, Zimbabwe **Fly into Maun on day 2 of the BTa14 (Monday)**

**€ 2 640 pps + local payment of US\$ 300**

Single supplement: € 550 pp

## DETAILED TOUR INFORMATION:

### *In a nutshell*

- A participation tour that offers an accommodated safari in Botswana at a reasonable price, accommodated in chalets, and cabins with a couple of nights tented camp to get us close to the wildlife.
- Some of the best wildlife viewing in Africa from open 4WDs and on game walks
- All inclusive trip with cultural experience, adventure and wildlife.
- Victoria Falls, Moremi Game Reserve, Chobe National Park, Okavango Delta, Kalahari Desert and Makgadikgadi Pans.

### **Why travel with Sunway Safaris**

We understand that there are several options available to you when choosing your African safari. We also know that you want to make the most informed decision about your safari, what you get, what's included and what you see and experience. So these are just a few of the Sunway qualities and facts:

- **Small groups** – by travelling with a maximum of 12 people, you can witness Africa and have first-hand contact with this amazing continent and its people without being a negative influence. This has been a key factor in our continued success. Our trips appeal to a wide demographic of traveller. Our clients range in age from 25 to 65+ with the average being 45. The range of travellers gives a variety of perspectives which adds to the experience of each safari.
- **2 Sunway tour guides** – group leaders are the key to any safari. On a Sunway safari you will travel with 2 qualified and registered field guides (Field Guides Association of SA). Two guides as crew, not a guide and a driver, means interesting trips with maximum knowledge and information. Our guides have a passion for Africa, her people and wildlife, and they love nothing more than sharing their knowledge with you.
- **Guaranteed departures** – departure dates on each itinerary shown as bold are guaranteed departure dates. All other departures operate with a minimum of 4 clients.
- **All-inclusive price** – when we travel ourselves, we always feel that if we're in a country we should find and see the best it has to offer. So when planning the Sunway routes, we ensure that each trip provides the best inclusions and experiences. For example, if you go to Botswana – you have to visit the national parks in an open 4WD – it is the essence of the Botswana wilderness. If you tour Zambia, then you must visit South Luangwa NP and do a game walk with a local scout. When booking on a Sunway Safari there are no hidden costs. All of the entrance fees are included, and a wide range of activities, and most meals. We have included many highlights in our tours, so that you will see and experience the highlights without having to pay extra when you get there. So when you decide on which safari company to book with, look carefully at what you're actually getting. You may only visit a place once, make sure you get the most out of it.
- **Safety** – our fleet of vehicles are custom built to ensure comfortable and safe touring. Each is constructed, by an authorised passenger vehicle builder, to the latest safety requirements, with a safety shell, and every seat has a lap belt. This gives you peace of mind when travelling with Sunway Safaris on the often demanding African roads.
- **Good2Go** - Our commitment to sustainable & responsible tourism is reflected in our low impact travel style where all we take is photographs and all we leave is our footprints. Being an African company, we have the grassroots contacts to make a real difference in the lives of the people whose lands we visit. On each itinerary in the brochure you'll find this symbol which highlights just one of the sustainable travel initiatives that we support.
- **Solo Travellers** – going it alone won't make your holiday more expensive; our reservations staff will match you up with another same-gender traveller to keep your holiday affordable. If however you request a single room or tent these are available, with a price supplement



- **Experience** - we have more than 27 years' experience planning tours throughout Southern Africa. As such, our itineraries and routes have been perfected over many years ensuring that your tour will run smoothly. We visit the highlights of Southern Africa but ensure that you do not follow the well-trodden tourist track. All of us at Sunway Safaris have extensive travel experience in Africa, and throughout the world. Being adventure travellers ourselves, we know how to plan trips that give you a broad experience of the countries that you will visit.
- **Based in Africa** - probably the most important part of a Sunway safari is that we are an African company with offices in South Africa and Botswana. We live in Africa, we travel in Africa and it is our passion for this amazing continent that makes Sunway your best travel option.
- **Age Policy** - On all scheduled tours, we accept children 12-17 with accompanying adult. We have no upper age limit. Clients older than 65 years of age at time of travel require a medical certificate stating the client is fit and healthy to join an adventure travel group tour. We have many clients over 65 years of age, who are perfectly capable of enjoying every aspect of a Sunway tour, both accommodated and camping. For more details contact [marketing@sunway-safaris.com](mailto:marketing@sunway-safaris.com).

### **SOS trees project – Okavango Botswana**

- For hundreds of years, the local communities in and around Botswana's Okavango Delta have used the wood of the sausage tree to craft their traditional mokoro (dugout canoes). The knowledge and skill have been passed down from generation to generation and, up until recently, has been a sustainable practice. With increasing numbers of people visiting the Delta each year, more mokoro are needed and as a direct result, more and more sausage trees are being felled and the sausage tree is sadly disappearing from the region. A traditional wooden mokoro will have to be replaced every five years, thereby placing increased pressure on the dwindling sausage tree supply.

Sunway Safaris has established a project to encourage polers in the local communities to buy replica fiberglass mokoro's, which have a lifespan of approximately ten years, are more stable and are produced without any negative affect to the environment. As such, sponsorship for each fiberglass mokoro is needed, and a portion of the tour cost will be donated to the project, but we also will offer our clients the opportunity to contribute to this worthwhile cause. Please feel free to contact the Sunway Safaris office for more information on the SOS Trees project or if you would like to make any contributions towards this project. It is something that is close to all of our hearts and we hope that it will be successful.

### **Local Payment**

- A local payment is required on this safari and this will be collected by your tour leader on departure. The local payment forms part of your overall tour cost and must be taken into consideration when booking your safari. It will be used by your tour leaders to pay for some of the operational costs incurred on safari.

Sunway prepays by bank transfer, as many of the tour costs as possible. However, in many cases, a cash payment is the only option: certain of the destinations that we visit, only accept cash. For example, entry fees to most national parks, some of the campsites and also local food markets (and even some shops) are only payable in cash. In addition, each Sunway vehicle has a garage card, but these are only accepted in South Africa and parts of Namibia, therefore in all other countries, fuel must be paid for in cash. Due to the remoteness of some departure points, having a local payment system enables us to manage tour funds effectively. The efficiency of this system helps keep the overall tour prices down.

For these reasons, it is necessary for Sunway to charge a local payment. It also ensures that a portion of the tour costs goes directly into the country you are visiting, thereby benefiting local communities and contributing to the conservation of the areas we visit. This is all part of Sunway Safaris' ongoing effort to operate sustainable safaris that make a real difference.

### **Recommended reading**

Before you travel you might want to read any of the following books. While not specific to the Sunway tour you will join, they do provide some background understanding of the countries you will be visiting.

- #1 Ladies Detective Agency by Alexander McCall Smith (Fictional story of life in Botswana)
- Trees of the Okavango by Veronica Roodt (A reference book with traditional uses and myths)
- Okavango: Jewel of the Kalahari by Karen Ross (A comprehensive description of the Delta ecology)
- Don't run whatever you do by Peter Allison (A guide's perspective of Botswana lodge life)
- Okavango: Africa's Last Eden by Frans Lanting (A coffee table book of photography)
- Newman's Birds of Southern Africa by Kenneth Newman
- Sasol Birds of Southern Africa by Ian Sinclair, Phil Hockey, and W.R. Tarboton
- The Safari Companion: A Guide to Watching African Mammals Including Hoofed Mammals, Carnivores, and Primates by Richard D. Estes and Daniel Otte
- Field Guide to Trees of Southern Africa (Field Guides) by Braam Van Wyk, Keith Coates Palgrav, and Piet Van Wyk

### **Shopping**

- Craft shopping for carvings, batiks, paintings and clothing are best in Victoria Falls which has a wide variety of curios. Botswana has beautiful grass weavings.



### **Food**

- We pride ourselves on offering delicious healthy meals to our clients and will provide three meals per day, except where shown in the itinerary, when we try out local restaurants.
- The tour leaders do the shopping and meal planning and meal preparation for each group. He/she will always try to obtain fresh produce wherever possible. A rough idea of what these will consist of is: Breakfast - cereals or coffee and toast or the occasional fried breakfast, Lunch - cheese, cold meats, salads on bread or rolls, Dinner - braais (local barbecue), potjies (stews), stir-fries etc. We use regular plates, cups and cutlery. All cooking and eating utensils will also be provided.
- We do cater for special dietary requirements (e.g. vegetarian or allergies.)
- We will supply fruit squash served with breakfast and tea or coffee served with breakfast and dinner. All other beverages will be for your own expense. We will not supply bottled drinking water although it is available at many shops on tour.

### **Difficulty**

- Anyone who is generally active and in good health should enjoy this trip. The accommodation used is simple but clean and this trip will appeal to anyone interested in getting the real wilderness of Botswana.
- Full itinerary with a couple of long driving days. The road conditions through the wilderness areas are very poor and our progress can at times be slow and dusty. Remember to hold on at all times and enjoy the ride!
- Everyone is asked to help with the running of camp on tour. In other words, if everyone spends a little time setting up camp, preparing meals and cleaning up then the tour will run smoothly, and everyone will have a good time. Participation is the name of the game.

### **Things you should know**

- Includes park entrances, game drives and the Okavango Delta excursion.
- Your client will need a valid passport and visas for entry into South Africa, Botswana & Zimbabwe.
- Luggage, please pack to a limit of 12kgs in a soft sports tog bag. Also bring daypack for walks and keeping in the vehicle. On the Accommodated Adventures & Classic Journeys, all bedding is provided, and you will not be required to bring a sleeping bag or pillow. At most accommodation establishments, towels will be provided, but it is always a good idea to bring a small travel towel for the beach or swimming pool. If you are traveling on a tour that visits the Okavango Delta please make sure to bring a small towel with you as there are no towels supplied.
- We recommend that you bring Euro, US\$ or South African Rand for personal expenses on this trip but please note that foreign currency will need to be changed into Botswana Pula as shops, restaurants and market vendors only accept BWP. Expenses in Victoria Falls can be paid in US\$ and major credit cards can also be used for optional activities. See the Sunway tour dossier for approximate costs of drinks and meals etc.

### **Common questions about this trip**

1. **Can I buy camera memory cards?** Memory cards and other photographic accessories will be available several times on tour. A camera with a zoom lens from wide angle to telephoto, 35-300mm, is advisable to capture both scenic and wildlife shots. Each vehicle is fitted with a 12/24V cigarette lighter – this should not be relied on for charging camera batteries and we recommend you bring a 2<sup>nd</sup> battery. Remember you can also charge your camera on those nights we use accommodation (SA 220V)
2. **Is it safe?** Botswana is relatively safe and your guide knows the country intimately and will endeavor to show you the best parts while looking after you. In the wild areas your guide will brief you on the necessary precautions, follow this advice and you will be fine. Be aware of your personal belongings and you will have a great trip!
3. **Do I need malaria tablets?** Yes, the trip passes through malaria areas and prophylactics are recommended.
4. **What do I need to bring?** All details are covered in our general tour briefing (available from [www.sunway-safaris.com](http://www.sunway-safaris.com) home page) but the basics are: - comfortable clothes for warm days and cool evenings, walking shoes, a raincoat, hat and sunglasses, swimsuit, a small pair of binoculars also comes in very handy and most importantly - a sense of adventure!