

Tour code: **CWa13**  
**2024**  
 Guaranteed departures  
 Small group safari maximum: **12 travellers**  
 Travel through: **South Africa & Namibia**  
 Safari length: **13 days**



## CAPE TO NAMIBIA

Cape Town to Namibia is a variety filled journey providing the best opportunities to explore the vast unique beauty of Namibia. Highlights include the spectacular Western Cape, the Fish River Canyon, the Namib Desert and Etosha NP.

**DEPARTS:** CAPE TOWN on Wednesday at 08:00am  
**ENDS:** WINDHOEK on Monday at 08:00am

### Highlights

- \* Cape Town – Cape Point day tour
- \* Fish River Canyon – walking
- \* Namib Desert – Sossusvlei dunes
- \* Swakopmund – dune boarding & quad biking
- \* Etosha National Park – game drives



## SAFARI GRADE: ACCOMMODATED

**CWa13 Cape Town to Windhoek** offers a complete Namibia safari with the bonus of a Cape Town start.

**CVa21 Cape Town to Victoria Falls** is the full 21 day safari.

**Overnight** 11 nights on safari we stay at small lodges and guest houses with en suite facilities. 1 night in the Cederberg in chalets where two bedrooms share a bathroom.

**Meals** 12 breakfasts, 10 lunches and 8 dinners are included. Of which 4 breakfasts are provided by the lodges. The remaining included meals are provided by the Sunway crew, prepared at the vehicle and eaten around the campfire or in a boma or dining area.

**Transport** for the majority of this safari you travel in custom-built Sunway Safari trucks with 12 forward facing seats. There are some long stretches of gravel road in Namibia, but they are generally well maintained and cruising speed is good.

**Limited participation** an essential part of your safari is some participation. From carrying your own bag to packing the truck in the morning – it's all part of your adventure. There are some long days with early starts so we all need to get involved to make the trip run efficiently. Where the tour leaders provide meals, we ask that clients help (on rotation) with the washing up.



## ACCOMMODATED ITINERARY

### Day 1 CAPE TOWN [hotel - - -]

Cape Town is one of the most picturesque cities in the world, with the majestic Table Mountain providing its central focus. Departing, after a tour briefing, from Cape Town at 08:00am we visit Hout Bay harbour en route to Cape Point Nature Reserve and then the African Penguin colony at Boulders Beach. We sample some of Cape Town's culinary wonders at a local restaurant in the Victoria & Alfred Waterfront (own expense).


*Day 1: Breakfast is not included*

*Day 1: Lunch is an own expense meal*

*Day 1: Dinner is an own expense meal*

**Includes:** Entrance fees to Penguin colony & Cape Nature Point.

**Distance/time:** ±150km, 3h30 actual driving time, but with stops, penguins and lunch is a full day out.

**Overnight:** [City Lodge V&A Waterfront](#) – twin rooms with en suite facilities. Restaurant, bar, gym and swimming pool. Wifi available. 



### Day 2 CEDERBERG [chalet BLD]

(B=breakfast, L=Lunch D=Dinner)

The Cederberg is a massive rock wilderness with giant sandstone boulders that have been sculpted by wind and rain into bizarre and artistic shapes. We head north to the Cederberg and explore the rugged landscape on foot before relaxing in chalets for the evening.

*Day 2: Breakfast provided by the hotel*

*Day 2: Lunch provided by tour leaders with the help of the group*

*Day 2: Dinner provided by tour leaders with the help of the group*

**Includes:** Entrance fees, and walk in the Cederberg.

**Distance/time:** ±250km, 3h30 actual driving time, it's a relatively short hop north and we expect a total travel day of ±4h30.

**Overnight:** [Western Cape Nature Conservation](#) – Algeria Cottages, 2 twin share bedrooms in each chalet with 1 bathroom shared between 2 rooms. No Wifi. 



### Day 3 GARIEP RIVER [lodge BLD]

We make our way into the more arid regions and upon entering Namibia, we stay at a lodge on the Gariep River. Namibia's southern border river flows quietly and peacefully and the river valley is hardly affected by tourism. The riverbed is sandy, the water clean and clear. Time free for swimming and relaxing or you can venture down the river in canoes (own expense).

*Day 3: Breakfast provided by tour leaders with the help of the group*

*Day 3: Lunch provided by tour leaders with the help of the group*

*Day 3: Dinner provided by tour leaders with the help of the group*

**Includes:** N/A

**Distance/time:** ±520km, 7h00 actual driving time, today is a stretch and with a border crossing (variable) we expect a travel day of ±9h00.

**Optional Activities** Half day canoe safari.

**For bookings contact:** [info@africantravels.com](mailto:info@africantravels.com) | [www.africantravels.com](http://www.africantravels.com) and receive a free WakaWaka Power+ solar charger



**Overnight:** [Felix Unite](#), twin share cabanas with en suite facilities. Bar, restaurant, telephone. Wifi available with data limit.



Felix Unite Provenance Camp is a camp based in Namibia and is 100% South African owned, with the staff made up of 46 Namibian and 1 South African. Food is sourced from local providers in Namibia. The camp has developed a community vegetable patch and has assisted a local crèche with playground equipment.



#### **Day 4** **FISH RIVER CANYON** [lodge BLD]

The Fish River Canyon, situated along the lower reaches of the Fish River, is one of the most impressive natural beauties in the southern part of Namibia. With its depth of up to 550 meters, the Fish River Canyon is the second largest canyon in the world. We make our way to the canyon in the afternoon to marvel at the sheer grandeur of the enormous canyon.

*Day 4: Breakfast provided by tour leaders with the help of the group*

*Day 4: Lunch provided by tour leaders with the help of the group*

*Day 4: Dinner provided by tour leaders with the help of the group*

**Includes:** Entrance fees to look out point at Fish River Canyon.

**Distance/time:** ±320km, 4h30 actual driving time, our first long gravel sections, we expect a total travel day of ±5h30.

**Overnight:** [Seeheim Hotel](#) – twin share chalet with en suite facilities. Wifi available in main area only.



#### **Day 5 - 6** **NAMIB DESERT** [lodge BLD]

The parched Namib Desert has endless orange dunes blown into sharp ridges by the sand-shifting wind and at Sossusvlei, they form a gateway into the Namib Desert. We will walk to Sossusvlei, explore Sesriem Canyon and from the comfort of our lodge outside the national park watch dramatic sunsets over the world's highest sand dunes. (If you prefer not to do the 4km walk to Sossusvlei there is an optional own expense 4WD transfer)

*Day 5, 6: Breakfast provided by tour leaders with the help of the group*

*Day 5, 6: Lunch provided by tour leaders with the help of the group*

*Day 5, 6: Dinner provided by tour leaders with the help of the group*

**Includes:** Entrance fees to Sesriem Canyon and Naukluft National Park.

**Distance/time:** ±460km, 5h30 actual driving time, through magnificent scenery but it's long total travel day of ±7h30.

**Optional Activities:** On arrival at Sossusvlei the guide will walk with the group into Sossusvlei (+/- 3.5km). For those clients who do not want to walk, there are 4WD vehicles that can drive you in. The 4WD is an own expense (+/- N\$85 each way) and is optional.

**Overnight:** [Desert Camp](#) – twin share permanent tents with en suite facilities. Restaurant, swimming pool & bar. Wifi available in main area only.





## Day 7 – 8 **SWAKOPMUND** [hotel pension Bx2 Lx1-]

Swakopmund is a popular seaside resort with a slightly nostalgic atmosphere, characterised by numerous colonial buildings. In terms of flora, both the Welwitschia Mirabilis and the Kokerboom grow on the stony plains of the Namib and many beautiful specimens surround this coastal town. Swakopmund is also the adventure activity capital of Namibia. Day free to explore the town or try dune boarding or sea kayaking (own expense).

*Day 7: Breakfast provided by tour leaders with the help of the group*

*Day 7: Lunch provided by tour leaders with the help of the group*

*Day 7: Dinner will be an own expense meal at a local restaurant*

*Day 8: Breakfast provided by the guest house*

*Day 8: Lunch will be an own expense meal*

*Day 8: Dinner will be an own expense meal at a local restaurant*

**Includes:**

N/A

**Distance/time:**

±360km, 5h30 actual driving time, this gravel road is very rough and we expect a total travel day of ±8h00.

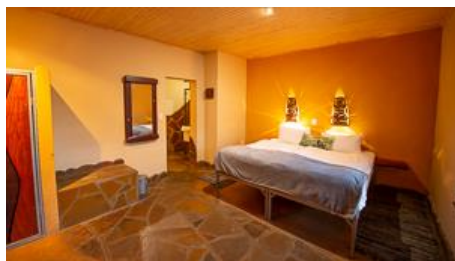
**Optional Activities:** Sand boarding, Skydiving, Ocean canoe safari, Scenic flights & many more.

**Overnight:**

[Hotel Pension a la Mer](#) - twin share standard rooms with en suite facilities. Telephone & restaurant. Wifi available.



Hotel A La Mer is 100% Namibian owned and all 20 staff are employed from the local community. Plastic is recycled through the Swakopmund depot. Solar generated electricity is used for hot water and underfloor heating.



## Day 9 **DAMARALAND** [chalet BLD]

Namibia is a land of great contrasts and Damaraland demonstrates this with stark plains, dry river beds and ancient valleys leading to rocky outcrops and the soaring peaks of the Brandberg Massif Mountains. On our way north we will visit the Cape Cross seal colony where thousands of Cape fur seals come ashore to rest and have their pups.

*Day 9: Breakfast provided by the guest house*

*Day 9: Lunch provided by tour leaders with the help of the group*

*Day 9: Dinner provided by tour leaders with the help of the group*

**Includes:**

Entrance fees to Cape Cross Seal colony

**Distance/time:**

±360km, 5h00 actual driving time, starting on a "salt" road. The road is generally quite good, for a total travel day of ±6h00.

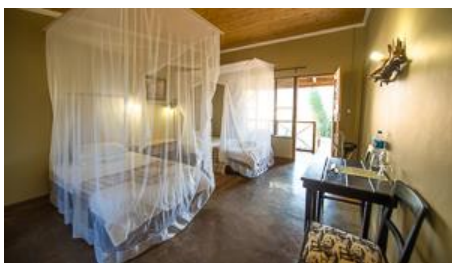
**Overnight:**

[Brandberg White Lady Lodge](#) - twin share chalets with en-suite facilities, bar, restaurant & swimming pool. Wifi available with data limit.



Brandberg White Lady Lodge is Namibian owned, employing 60 Namibians. They use 100% solar-generated electricity and borehole water to grow their own fruit and vegetables. The lodge contributes to wildlife introductions to the area and assist with anti-poaching programmes. Their Wildlife Credit Scheme assists in managing human-wildlife conflict situations.






**Day 10 – 11 ETOSHA NP** [guest lodge BLD]

Once a vast lake fed by the Kunene River, the pan that is Etosha NP dried up thousands of years ago when the river waters chose a new course. Etosha is big game country. We take game drives around the huge pan to find the elephants, herds of antelope and lions around the waterholes. We stay at a lodge on the outskirts of the national park.

*Day 10, 11: Breakfast provided by tour leaders with the help of the group*

*Day 10, 11: Lunch provided by tour leaders with the help of the group*

*Day 10, 11: Dinner provided by tour leaders with the help of the group*

- Includes:** Entrance fees to Etosha National Park, full day game drive in Etosha NP.
- Distance/time:** ±540km, 7h30 actual driving time, the road can be rough and with an afternoon game drive in Etosha we expect a total of ±9h30 in the vehicle.
- Overnight:** [Tarentaal Guest Farm](#) – private working farm outside Etosha National Park. Twin rooms with en-suite facilities. Swimming pool, bar & telephone. (35km/25min from Anderson Gate to Etosha). Wifi available in main area only. 



Tarentaal Guest Farm is Namibian owned and managed; all staff employed from the local community. The camp runs on 100% solar power and they produce beef on the farm. The farm plants a lot of "Spekboom" which aids in oxygen production. They support the Ditzza project to uplift women and children and are members of the Excelsior Farmers Association doing community initiatives.




**Day 12 WINDHOEK** [guest house BL-]

This pretty town, beautifully situated in a valley, combines the architecture of a modern city with numerous buildings in the style of the German colonial era. The charm of the city of Windhoek lies in its harmonious blend of African and European cultures and the friendliness of its people. We visit the cosmopolitan capital and enjoy a restaurant meal (own expense).

*Day 12: Breakfast provided by tour leaders with the help of the group*

*Day 12: Lunch provided by tour leaders with the help of the group*

*Day 12: Dinner will be an own expense meal at a local restaurant*

- Includes:** N/A
- Distance/time:** ±410km, 5h00 actual driving time, good tarmac road and a stop for market shopping, we expect a total travel day of ±6h00.
- Overnight:** [Terra Africa Guesthouse](#) – twin rooms with en-suite facilities, swimming pool, restaurant & bar. Wifi available. 



Terra Africa Guesthouse is a Namibian family-owned and managed establishment that has been in operation for over two decades. Its employees are all local Namibians recruited from the surrounding communities. Terra Africa is dedicated to environmentally friendly practices. For instance, glass and plastic are separated on-site for recycling, exclusively biodegradable cleaning products are utilized, energy-efficient appliances have been installed, and refillable bottles are employed in bathrooms to minimize plastic waste.



**Day 13 WINDHOEK - TOUR ENDS [- B--]**

Tour ends at 08:00 at the guesthouse. Transfers to airport available on request

*Day 13: Breakfast will be provided by the guest house*

*Day 13: NA*

*Day 13: Na*

**Includes:** N/A  
**Distance/time:** N/A  
**Optional Activities** N/A  
**Overnight:** N/A

**Please note:**

The distance and travel times quoted above are an estimate only, and subject to local road conditions and photo stops!

**Please note:**

That the accommodation specified above and in the itinerary, is a guide only and is subject to availability. Alternatives will be of a similar standard, and accommodation changes will be made without notice.

**Special Interest:**

See magnificently dressed Herero women whose traditional dress is reminiscent of the early German colonisation of German South-West Africa. Herero Dolls made in this fashion can be bought as curios and make wonderful gifts.

**Sustainable Tourism:**

During our stay in Damaraland, a local guide takes us to visit a San Bushman Rock Art site. Our entrance fees go towards ensuring that the area remains protected for future generations, and that the local community benefits directly from tourism.

**2024 PRICES AND DEPARTURE DATES:**

**RACK Price:** (Valid: Jan 2024 – Dec 2024)

**13 Day € 2 540 pps**

**Single supplement: € 385 pp** (If you are travelling on your own, Sunway will "room" you with another same gender client. You do not pay extra when booking as a single person. If however you request a single, then you'll pay the single supplement and have a single room.)

**2024 DEPARTURE DATES**

**CWa13** Cape to Windhoek  
 Departs Ends  
 CAPE TOWN WINDHOEK  
 Wednesday at Monday at  
 08:00 am 08:00 am



**CVa21** Cape to Victoria Falls Grand Explorer  
 Departs Ends  
 CAPE TOWN VICTORIA FALLS  
 Wednesday at Tuesday at  
 08:00 am 08:00 am

SAa	10-Jan-24	22-Jan-24	
SAag	24-Jan-24	05-Feb-24	German
SAa	<b>31-Jan-24</b>	<b>12-Feb-24</b>	
SAa	<b>07-Feb-24</b>	<b>19-Feb-24</b>	
SAa	21-Feb-24	04-Mar-24	
SAa	13-Mar-24	25-Mar-24	
SAa	27-Mar-24	08-Apr-24	
SAa	<b>10-Apr-24</b>	<b>22-Apr-24</b>	
SAag	<b>17-Apr-24</b>	<b>29-Apr-24</b>	German
SAa	<b>24-Apr-24</b>	<b>06-May-24</b>	
SAa	15-May-24	27-May-24	
SAa	29-May-24	10-Jun-24	
SAag	05-Jun-24	17-Jun-24	German
SAa	<b>12-Jun-24</b>	<b>24-Jun-24</b>	

SAa	10-Jan-24	30-Jan-24	
SAag	24-Jan-24	13-Feb-24	German
SAa	<b>31-Jan-24</b>	<b>20-Feb-24</b>	
SAa	<b>07-Feb-24</b>	<b>27-Feb-24</b>	
SAa	21-Feb-24	12-Mar-24	
SAa	13-Mar-24	02-Apr-24	
SAa	27-Mar-24	16-Apr-24	
SAa	<b>10-Apr-24</b>	<b>30-Apr-24</b>	
SAag	<b>17-Apr-24</b>	<b>07-May-24</b>	German
SAa	<b>24-Apr-24</b>	<b>14-May-24</b>	
SAa	15-May-24	04-Jun-24	
SAa	29-May-24	18-Jun-24	
SAag	05-Jun-24	25-Jun-24	German
SAa	<b>12-Jun-24</b>	<b>02-Jul-24</b>	

For bookings contact: [info@africantravels.com](mailto:info@africantravels.com) | [www.africantravels.com](http://www.africantravels.com) and receive a free WakaWaka Power+ solar charger

SAag	<b>03-Jul-24</b>	<b>15-Jul-24</b>	German	SAag	<b>03-Jul-24</b>	<b>23-Jul-24</b>	German
SAa	<b>10-Jul-24</b>	<b>22-Jul-24</b>		SAa	<b>10-Jul-24</b>	<b>30-Jul-24</b>	
SAag	<b>17-Jul-24</b>	<b>29-Jul-24</b>	German	SAag	<b>17-Jul-24</b>	<b>06-Aug-24</b>	German
SAa	<b>24-Jul-24</b>	<b>05-Aug-24</b>		SAa	<b>24-Jul-24</b>	<b>13-Aug-24</b>	
SAa	<b>31-Jul-24</b>	<b>12-Aug-24</b>		SAa	<b>31-Jul-24</b>	<b>20-Aug-24</b>	
SAa	<b>07-Aug-24</b>	<b>19-Aug-24</b>		SAa	<b>07-Aug-24</b>	<b>27-Aug-24</b>	
SAa	<b>14-Aug-24</b>	<b>26-Aug-24</b>		SAa	<b>14-Aug-24</b>	<b>03-Sep-24</b>	
SAa	<b>28-Aug-24</b>	<b>09-Sep-24</b>		SAa	<b>28-Aug-24</b>	<b>17-Sep-24</b>	
SAa	<b>04-Sep-24</b>	<b>16-Sep-24</b>		SAa	<b>04-Sep-24</b>	<b>24-Sep-24</b>	
SAa	<b>11-Sep-24</b>	<b>23-Sep-24</b>		SAa	<b>11-Sep-24</b>	<b>01-Oct-24</b>	
SAa	<b>02-Oct-24</b>	<b>14-Oct-24</b>		SAa	<b>02-Oct-24</b>	<b>22-Oct-24</b>	
SAag	<b>16-Oct-24</b>	<b>28-Oct-24</b>	German	SAag	<b>16-Oct-24</b>	<b>05-Nov-24</b>	German
SAa	<b>23-Oct-24</b>	<b>04-Nov-24</b>		SAa	<b>23-Oct-24</b>	<b>12-Nov-24</b>	
SAa	<b>30-Oct-24</b>	<b>11-Nov-24</b>		SAa	<b>30-Oct-24</b>	<b>19-Nov-24</b>	
SAa	<b>20-Nov-24</b>	<b>02-Dec-24</b>		SAa	<b>20-Nov-24</b>	<b>10-Dec-24</b>	
SAag	<b>27-Nov-24</b>	<b>09-Dec-24</b>	German	SAag	<b>27-Nov-24</b>	<b>17-Dec-24</b>	German
SAa	04-Dec-24	16-Dec-24		SAa	04-Dec-24	24-Dec-24	
SAa	11-Dec-24	23-Dec-24		SAa	11-Dec-24	31-Dec-24	
SAa	18-Dec-24	30-Dec-24		SAa	18-Dec-24	07-Jan-25	
SAa	01-Jan-25	13-Jan-25		SAa	01-Jan-25	21-Jan-25	
SAa	08-Jan-25	20-Jan-25		SAa	08-Jan-25	28-Jan-25	

\* **Bold dates** are guaranteed departures, all other dates guaranteed from 4 clients.

\* **SAa:** The "Cape to Namibia" can be combined after selected SAa17 South Africa "Rainbow Route" departures to create a complete circular safari in Southern Africa.

\* **German / g:** These tours have a German speaking translator / tour leader

**CVa21** Cape Town to Victoria Falls, Zimbabwe

**€ 3 695 pps**

Single supplement: € 805 pp

**CWa13** Cape Town to Windhoek

**€ 2 540 pps**

Single supplement: € 385 pp

## DETAILED TOUR INFORMATION:

### *In a nutshell*

- A true exploration of Southern Africa - see it all – and have the comfort of a bed each night!
- A participation tour that offers an accommodated safari at a reasonable price, accommodated in chalets, and cabins with a couple of nights in a tented camp in the Okavango to get us close to the wildlife.
- All-inclusive trip with cultural experience, adventure and wildlife.
- Gariiep River, Fish River Canyon, Namib desert, Sossusvlei, Swakopmund, Skeleton Coast, Spitzkoppe, Twyfelfontein engravings, Etosha, Okavango Delta, Victoria Falls.

### *Why travel with Sunway Safaris*

We understand that there are several options available to you when choosing your African safari. We also know that you want to make the most informed decision about your safari, what you get, what's included and what you see and experience. So these are just a few of the Sunway qualities and facts:

- **Small groups** – by travelling with a maximum of 12 people, you can witness Africa and have first-hand contact with this amazing continent and its people without being a negative influence. This has been a key factor in our continued success. Our trips appeal to a wide demographic of traveller. Our clients range in age from 25 to 65+ with the average being 45. The range of travellers gives a variety of perspectives which adds to the experience of each safari.
- **2 Sunway tour guides** – group leaders are the key to any safari. On a Sunway safari you will travel with 2 qualified and registered field guides (Field Guides Association of SA). Two guides as crew, not a guide and a driver, means interesting trips with maximum knowledge and information. Our guides have a passion for Africa, her people and wildlife, and they love nothing more than sharing their knowledge with you.
- **Guaranteed departures** – departure dates on each itinerary shown as bold are guaranteed departure dates. All other departures operate with a minimum of 4 clients.
- **All-inclusive price** – when we travel ourselves, we always feel that if we're in a country we should find and see the best it has to offer. So when planning the Sunway routes, we ensure that each trip provides the best inclusions and experiences. For example, if you go to Botswana – you have to visit the national parks in an open 4WD – it is the essence of the Botswana wilderness. If you tour Zambia, then you must visit South Luangwa NP and do a game walk with a local scout. When booking on a Sunway Safari there

**For bookings contact:** [info@africantravels.com](mailto:info@africantravels.com) | [www.africantravels.com](http://www.africantravels.com) and receive a free WakaWaka Power+ solar charger



are no hidden costs. All of the entrance fees are included, and a wide range of activities, and most meals. We have included many highlights in our tours, so that you will see and experience the highlights without having to pay extra when you get there. So when you decide on which safari company to book with, look carefully at what you're actually getting. You may only visit a place once, make sure you get the most out of it.

- **Safety** – our fleet of vehicles are custom built to ensure comfortable and safe touring. Each is constructed, by an authorised passenger vehicle builder, to the latest safety requirements, with a safety shell, and every seat has a lap belt. This gives you peace of mind when travelling with Sunway Safaris on the often demanding African roads.
- **Good2Go** - Our commitment to sustainable & responsible tourism is reflected in our low impact travel style where all we take is photographs and all we leave is our footprints. Being an African company, we have the grassroots contacts to make a real difference in the lives of the people whose lands we visit. On each itinerary in the brochure you'll find this symbol which highlights just one of the sustainable travel initiatives that we support.
- **Solo Travellers** – going it alone won't make your holiday more expensive; our reservations staff will match you up with another same-gender traveller to keep your holiday affordable. If however you request a single room or tent these are available, with a price supplement
- **Experience** - we have more than 28 years' experience planning tours throughout Southern Africa. As such, our itineraries and routes have been perfected over many years ensuring that your tour will run smoothly. We visit the highlights of Southern Africa but ensure that you do not follow the well-trodden tourist track. All of us at Sunway Safaris have extensive travel experience in Africa, and throughout the world. Being adventure travellers ourselves, we know how to plan trips that give you a broad experience of the countries that you will visit.
- **Based in Africa** - probably the most important part of a Sunway safari is that we are an African company with offices in South Africa and Botswana. We live in Africa, we travel in Africa and it is our passion for this amazing continent that makes Sunway your best travel option.
- **Age Policy** - On all scheduled tours, we accept children 12-17 with accompanying adult. We have no upper age limit. Clients older than 65 years of age at time of travel require a medical certificate stating the client is fit and healthy to join an adventure travel group tour. We have many clients over 65 years of age, who are perfectly capable of enjoying every aspect of a Sunway tour, both accommodated and camping. For more details contact [marketing@sunway-safaris.com](mailto:marketing@sunway-safaris.com).



#### **SOS trees project – Okavango Botswana**

- For hundreds of years, the local communities in and around Botswana's Okavango Delta have used the wood of the sausage tree to craft their traditional mokoro (dugout canoes). The knowledge and skill have been passed down from generation to generation and, up until recently, has been a sustainable practice. With increasing numbers of people visiting the Delta each year, more mokoro are needed and as a direct result, more and more sausage trees are being felled and the sausage tree is sadly disappearing from the region. A traditional wooden mokoro will have to be replaced every five years, thereby placing increased pressure on the dwindling sausage tree supply.

Sunway Safaris has established a project to encourage polers in the local communities to buy replica fiberglass mokoro's, which have a lifespan of approximately ten years, are more stable and are produced without any negative affect to the environment. As such, sponsorship for each fiberglass mokoro is needed, and a portion of the tour cost will be donated to the project, but we also will offer our clients the opportunity to contribute to this worthwhile cause. Please feel free to contact the Sunway Safaris office for more information on the SOS Trees project or if you would like to make any contributions towards this project. It is something that is close to all of our hearts and we hope that it will be successful.

#### **Local Payment**

- There is no local payment required on this safari.

#### **Participation**

- An essential part of your Sunway Safari is participation – from helping around the camp fire, to packing away in the morning, to helping with cleaning up – it's all part of your adventure and when everyone puts in a little effort the trip will run smoothly. Your tour leaders will do all the meal preparation but we do ask the clients to help with the washing up. Team spirit is part of the fun!

#### **Recommended reading**

Before you travel you might want to read any of the following books. While not specific to the Sunway tour you will join, they do provide some background understanding of the countries you will be visiting.

- Long Walk to Freedom by Nelson Mandela (Autobiography - Nelson Mandela is one of the great moral and political leaders of our time.)
- Sands of Silence by Peter H Capstick (Tales of travels and the Bushmen's culture and their political persecution)
- Skeleton Coast by John H Marsh (Wreck of the Dunedin Star and its survivors)
- The Diamond Hunters by Wilbur Smith (Fictional family feud set in Namibia)

**For bookings contact:** [info@africantravels.com](mailto:info@africantravels.com) | [www.africantravels.com](http://www.africantravels.com) and receive a free WakaWaka Power+ solar charger



- The Skeleton Coast by Benedict Allen (A journey through the Namib Desert)
- The Smell of Apples by Mark Behr (Story of a boy in Cape Town and then army on Caprivi)
- Etosha by Daryl and Sharna Balfour (A coffee table book of photography)
- Newman's Birds of Southern Africa by Kenneth Newman
- Sasol Birds of Southern Africa by Ian Sinclair, Phil Hockey, and W.R. Tarboton
- The Safari Companion: A Guide to Watching African Mammals Including Hoofed Mammals, Carnivores, and Primates by Richard D. Estes and Daniel Otte
- Field Guide to Trees of Southern Africa (Field Guides) by Braam Van Wyk, Keith Coates Palgrav, and Piet Van Wyk

### Shopping

- Craft shopping for carvings, batiks, paintings and clothing is best in Livingstone, Zambia which has a wide variety of curios. Botswana has beautiful grass weavings. Namibia also has unusual and interesting curios and crafts. If you see something you like, it is best to buy it because it is unlikely that you will see something similar further along. Crafts change from region to region.

### Food

- We pride ourselves on offering delicious healthy meals to our clients and will provide three meals per day, except where shown in the itinerary, when we try out local restaurants.
- The tour leaders do the shopping and meal planning for each group. He/she will always try to obtain fresh produce wherever possible. A rough idea of what these will consist of is: Breakfast - cereals or coffee and toast or the occasional fried breakfast, Lunch - cheese, cold meats, salads on bread or rolls, Dinner - braais (local barbecue), potjies (stews), stir-fries etc. We use regular plates, cups and cutlery. All cooking and eating utensils will also be provided.
- We do cater for special dietary requirements (e.g. vegetarian or allergies.)
- We will supply fruit squash served with breakfast and tea or coffee served with breakfast and dinner. All other beverages will be for your own expense. We will not supply bottled drinking water although it is available at many shops on tour.

### Difficulty

- Anyone who is generally active and in good health should enjoy this trip. The accommodation used is simple but clean.
- Full itinerary with a couple of long driving days, but also plenty of outdoor activity with some relaxing time. This is a long-distance trans Africa safari - there is a lot of distance to be covered and so there will be some long travelling days. Due to local conditions, border crossings, road detours and weather, the trip may alter route/schedule - please remember that this continent has its own time scale and things work differently here. Keep an open mind and a sense of humour - it's all part of the adventure!
- Everyone is asked to help with the running of the tour. In other words, if everyone spends a little time helping then the tour will run smoothly and everyone will have a good time. Participation is the name of the game.

### Things you should know

- Includes park entrances, game drives and the Okavango Delta excursion.
- Your client will need a valid passport and visas for entry into South Africa, Namibia, Botswana and Zimbabwe.
- Luggage, please pack to a limit of 12kgs in a soft sports tog bag. Also, bring a daypack for walks and keeping in the vehicle. On the Accommodated Adventures & Classic Journeys, all bedding is provided, and you will not be required to bring a sleeping bag or pillow. At most accommodation establishments, towels will be provided, but it is always a good idea to bring a small travel towel for the beach or swimming pool. If you are travelling on a tour that visits the Okavango Delta please make sure to bring a small towel with you as there are no towels supplied.
- We recommend that you bring Euro, US\$ or South African Rand for personal expenses on this trip but please note that in South Africa and Namibia Euro and US\$ will need to be changed into Namibian \$ or South African Rand as shops, restaurants and market vendors only accept N\$ and ZAR. In Botswana please note that foreign currency will need to be changed into Botswana Pula as shops, restaurants and market vendors only accept BWP. Expenses in Livingstone can be paid in US\$ or Euro and major credit cards can also be used for optional activities throughout this tour. See the Sunway tour dossier for approximate costs of drinks and meals etc.

### Common questions about this trip

1. **Can I buy camera memory cards?** Memory cards and other photographic accessories will be available several times on tour. A camera with a zoom lens from wide-angle to telephoto, 35-300mm, is advisable to capture both scenic and wildlife shots. Each vehicle is fitted with a 12/24V cigarette lighter – this should not be relied on for charging camera batteries and we recommend you bring a 2<sup>nd</sup> battery. Remember you can also charge your camera on those nights we use accommodation (SA 220V)
2. **Is it safe?** South Africa, Namibia, Botswana and Zambia are relatively safe and your guide knows the countries intimately and will endeavour to show you the best parts while looking after you. In the wild areas, your guide will brief you on the necessary precautions, follow this advice and you will be fine. Be aware of your personal belongings and you will have a great trip! Every precaution is taken to ensure a happy holiday.
3. **Do I need malaria tablets?** Yes, the trip passes through malaria areas and prophylactics are recommended.
4. **What do I need to bring?** All details are covered in our general tour briefing (available from [www.sunway-safaris.com](http://www.sunway-safaris.com) on the home page) but the basics are: - comfortable clothes for warm days and cool evenings,

walking shoes, a raincoat, hat and sunglasses, swimsuit, a small pair of binoculars also comes in very handy and most importantly - a sense of adventure!

