

Tour code:

**NBa21
2026**

Guaranteed departures

Small group safari maximum: **12 travellers**

Travel through:

Namibia & Botswana

Safari length:

21 days

NAMIBIA & BOTSWANA "SOUTHERN CIRCLE"

In this 21-day trip, we've lassoed all the highlights of Namibia and Botswana together, from Namibia's famous Sossusvlei dunes to Botswana's epic game reserves. Soak up Victoria Falls before crossing into arid Namibia's Etosha National Park. Climb the Namib Desert dunes, then bush walk in Botswana with the San Bushmen. Dug-out canoes take you deep into the Okavango Delta, and a cruise caps things off in Chobe National Park.

DEPARTS: LIVINGSTONE on Sunday at 14:00pm

ENDS: LIVINGSTONE on Saturday at +/- 12:00noon

Highlights

- * Victoria Falls – A natural wonder of the world
- * Etosha NP – game viewing
- * Damaraland– rock paintings
- * Namib Desert – walk Sossusvlei dunes
- * Kalahari – bush walk with San Bushman
- * Okavango Delta – mokoro excursion and bush walks
- * Chobe NP – sunset boat cruise on Chobe River



SAFARI STYLE: ACCOMMODATED

The same itinerary offered as camping option, see page 42.

NBa21 Livingstone to Livingstone is the full circular route.

NBa15 Livingstone to Windhoek offers northern Namibia with a Victoria Falls start. See page 18.

Overnight 18 nights on safari at small lodges (including tented lodges), with en suite facilities. 2 nights tented camp in the Okavango. Each tent has twin camp beds with linen and en suite chemical toilet. Shared bucket shower tent with hot water off the fire.

Meals 20 breakfasts, 17 lunches & 11 dinners included. Of which 9 breakfasts are provided by the lodges. The remaining included meals are provided by Sunway crew and meals will be enjoyed around the campfire at the truck.

Transport for the majority of this safari you travel in custom-built Sunway Safari trucks with 12 forward facing seats. On 5% of tours we may use Mercedes Sprinter minibuses with 12 forward facing seats and air conditioning. There are some long distances to cover and a few early morning starts. For the transfer to the Okavango, we use open-sided 4WD vehicles with local guides.

Limited participation an essential part of your safari is some participation. From carrying your own bag to packing the truck in the morning – it's all part of your adventure. Where the tour leaders provide meals, we ask that clients help (on rotation) with the washing up.



Day 1 - 2

LIVINGSTONE [chalet Bx1--]

(B=breakfast, L=lunch, D=dinner)

Tour departure meeting at 14:00pm. Victoria Falls is one of the natural wonders of the world and we take 2 days to explore this area. Adventure activities abound, white water rafting on the mighty Zambezi, helicopter flights or an 111m bungee jump (own expense).

Day 1: Breakfast is not included

Day 1: Lunch is an own expense meal

Day 1: Dinner will be an own expense meal at a local restaurant

Day 2: Breakfast provided by the lodge


Day 2: Lunch is an own expense meal

Day 2: Dinner will be an own expense meal at a local restaurant

Includes: Entrance to see the Victoria Falls.

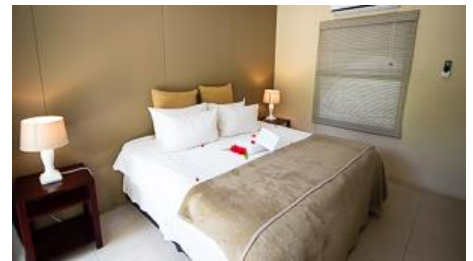
Distance/time: N/A

Optional Activities: White water rafting, sunset cruises, scenic flights & many more.

Overnight: [Victoria Falls Waterfront](#) – Twin share Adventure Village chalet with en-suite facilities. Swimming pool, bar, restaurant, telephone. (Or Maramba Lodge, twin share chalet with en-suite facilities). Wifi available in main area only. 



Victoria Falls Waterfront is 100% Zimbabwean owned. To conserve water in the area, 99% of the water from the Zambezi River is filtered. They support Kamwe School a poorly funded government school as well as providing six month training programmes and practical experience for students who are studying tourism and hospitality related subjects in college.



Day 3 - 4

CAPRIVI [chalet BLD]

Crossing out of Zambia into the Caprivi strip, we spend two days travelling west through this game rich area. Near Katima Mulilo we explore by boat a permanent lake flooded by the Zambezi River, where we'll witness extraordinary birdlife, and we'll game drive in the Mahango Game Reserve on the flood plains of the Kavango River.

Day 3: Breakfast provided by the lodge

Day 3: Lunch provided by the tour leaders with the help of the group

Day 3: Dinner provided by the tour leaders with the help of the group

Day 4: Breakfast will be provided by the lodge


Day 4: Lunch provided by the tour leaders with the help of the group

Day 4: Dinner provided by the tour leaders with the help of the group

Includes: Entrance fees, boat cruise & game drives.

Distance/time: **Day 3:** ±230km, 4h00 actual driving time, we travel via Kazungula and Ngoma, crossing briefly through Botswana (the most efficient route). Two border crossings & a lunch stop mean we expect a total travel day of ±5h30.

Day 4: ±410km, 6h00 actual driving time, en route we stop for a village walk and expect a travel day of ±08h00.

Overnight: [Caprivi Mutoya Lodge](#) – twin share permanent tents and chalets with en-suite facilities. (Note different room types so lodge will allocate rooms on arrival).  Swimming pool, bar, restaurant. Limited wifi available at reception.

[Ngepi Camp](#) – twin share tree houses with en-suite facilities. Swimming cage in the river, bar & restaurant. Wifi available at restaurant.



Caprivi Mutoya Lodge is owner-managed and has trained and employed most of their staff from surrounding local communities. Activity income from mokoro canoe rides and village tours is paid directly to the local community. The lodge has sponsored a fresh water borehole in Lisikile Village and pays a monthly fee into their village community fund, which goes towards the maintenance of a nursery school. The lodge grows their own herb garden and recycles kitchen waste for compost.



Day 5 **RUNDU** [chalet BL-]

After a morning enjoying the abundant birdlife that surrounds the camp, our road takes us along the Kavango River. Villages of grass huts and local wooden crafts and carvings a common sight. We stop for the night at our riverside lodge in Rundu and enjoy a spectacular sunset.


Day 5: Breakfast provided by the tour leaders with the help of the group

Day 5: Lunch provided by the tour leaders with the help of the group

Day 5: Dinner will be an own expense meal provided by the lodge

Includes: N/A

Distance/time: ±240km, 3h30 actual driving time, with a couple of stops it's a travel day of less than ±4h30.

Overnight: [Inkwazi Lodge](#) – twin permanent chalets with en-suite facilities, Swimming pool, bar & restaurant. No wifi. 



Inkwazi Lodge is Namibian owned and operated, with all 15 staff employed from the local community. The owners started a pre-school 12 years ago, providing 40-50 children with 3 meals a day and an education in preparation for Grade 1. They also support 40 - 55 scholars from grade 1 to 12 and are currently supporting 5 university students. Guided village visits have a financial benefit for the local community. In addition, the lodge runs on 25% solar power, grows 50% of the vegetables needed and they have a small indigenous nursery on site.



Day 6, 7 – 8 **ETOSHA NATIONAL PARK** [lodge BLD]

We head deeper into Namibia to the Etosha National Park. The National Park surrounds the Etosha Pan and is locally named "the great white place of dry water". Waterholes surround the pan and attract game. Etosha is known for great sightings of elephant, antelope and lions. Our lodge lies on the boundary of the park and we spend our mornings and afternoons on game drives.

Day 6: Breakfast will be provided by the lodge

Day 6: Lunch provided by the tour leaders with the help of the group

Day 6: Dinner provided by the tour leaders with the help of the group


Day 7, 8: Breakfast provided by the tour leaders with the help of the group

Day 7, 8: Lunch provided by the tour leaders with the help of the group

Day 7, 8: Dinner provided by the tour leaders with the help of the group

Includes: Entrance fees to Etosha National Park, 2x full days in Etosha NP.

Distance/time: ±620km, 8h00 actual driving time, day 6 is a long transit travel day of ±9h30. The following full day is set aside for game drives in Etosha NP.

Overnight: [Tarentaal Guest Farm](#) – private working farm outside Etosha National Park. Twin rooms with en-suite facilities. Swimming pool, bar & telephone. (35km/25min from Anderson Gate to Etosha). Wifi available in main area only. 



Tarentaal Guest Farm is Namibian owned and managed; all staff employed from the local community. The camp runs on 100% solar power and they produce beef on the farm. The farm plants a lot of "Spekboom" which aids in oxygen production. They support the Ditza project to uplift women and children and members of the Excelsior Farmers association doing community initiatives.




Day 9 **BRANDBERG** [lodge BLD]

Our journey covers some beautiful desert landscapes as we move south towards the Brandberg Mountain. Our lodge is situated in the dry Ugab River which is home to the rare desert elephants. We take a walk with a local guide to view the famous White Lady rock painting in the area.

Day 9: Breakfast provide by the tour leaders with the help of the group

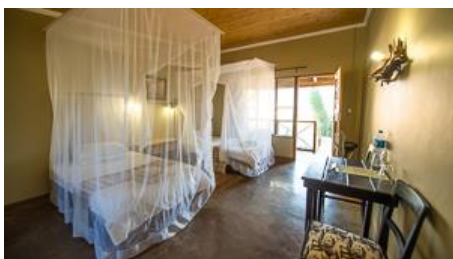
Day 9: Lunch provided by the tour leaders with the help of the group

Day 9: Dinner provided by the tour leaders with the help of the group

Includes: Entrance to the Brandberg rock art.
Distance/time: ±445km, 6h00 actual driving time, and with a couple of stops on the way it's a long and varied day of ±9h00 to our nest overnight stop.
Overnight: [Brandberg White Lady Lodge](#) – twin share chalets with en-suite facilities, bar, restaurant & swimming pool. Wifi available with data limit. 



Brandberg White Lady Lodge is Namibian owned, employing 60 Namibians. They use 100% solar generated electricity and borehole water to grow their own fruit and vegetables. The lodge contributes to wildlife introductions to the area and assist with anti-poaching programmes. Their Wildlife Credit Scheme assists in managing human wildlife conflict situations.



Day 10 – 11 **SWAKOPMUND** [hotel pension Bx2 Lx1 -]

We cross flat open plains to the coast where we visit the Cape Cross seal colony. Further south is the coastal town of Swakopmund where we have a day free to explore the town or try sea kayaking or dune boarding (own expense). German colonial influences are strong in the town of Swakopmund as is reflected in the restaurant menus and the architecture.

Day 10: Breakfast provide by the tour leaders with the help of the group


Day 10: Lunch provided by the tour leaders with the help of the group

Day 10: Dinner will be an own expense meal at a local restaurant

Day 11: Breakfast will be provided by the hotel

Day 11: Lunch will be an own expense meal

Day 11: Dinner will be an own expense meal at a local restaurant

Includes: Entrance to Cape Cross seal colony.
Distance/time: ±350km, 5h00 actual driving time, after a morning walk we have travel day of 8h00 including a visit to Cape Cross.
Optional Activities: Sand boarding, Skydiving, Ocean canoe safari, Scenic flights & many more.
Overnight: [Hotel Pension a la Mer](#) - twin share standard rooms with en suite facilities. Telephone & restaurant. Wifi available. 



Hotel A La Mer is 100% Namibian owned and all 20 staff are employed from the local community. Plastic is recycled through the Swakopmund depot. Solar generated electricity is used for hot water and underfloor heating.



Day 12 – 13 NAMIB DESERT [chalet BLD]

The lunar landscapes surround the town of Swakopmund and we visit these as we leave and head into the Namib Desert with its towering red sand dunes. We will walk to Sossusvlei, explore Sesriem Canyon and from the comfort of our lodge outside the national park watch a dramatic sunset over the world's highest sand dunes.

Day 12: Breakfast will be provided by the hotel

Day 12: Lunch provided by the tour leaders with the help of the group

Day 12: Dinner provided by the tour leaders with the help of the group

Day 13: Breakfast provided by the tour leaders with the help of the group

Day 13: Lunch provided by the tour leaders with the help of the group

Day 13: Dinner provided by the tour leaders with the help of the group

Includes: Entrance fees to Sesriem Canyon and Naukluft National Park.

Distance/time: ±360km, 5h00 actual driving time, the desert scenery is varied but the road is rough gravel, so with a few stops it's a long travel day of ±7h00.

Optional Activities: On arrival at Sossusvlei the guide will walk with the group into Sossusvlei (+/- 3.5km). For those who do not want to walk, there are 4WD vehicles that can drive you in. The 4WD, is an own expense and is optional.

Overnight: Namib Desert, [Desert Camp](#) – chalet with en suite facilities. Restaurant, swimming pool & bar. Wifi available in main area only.



Day 14 WINDHOEK [guest house BL-]

Windhoek is the capital and largest city in Namibia, its charm lies in its harmonious blend of African and European cultures and the friendliness of its people and an interesting mix of modern and German colonial era influenced architecture. We arrive late in the day and enjoy a restaurant meal (own expense).

Day 14: Breakfast provided by the tour leaders with the help of the group

Day 14: Lunch provided by the tour leaders with the help of the group

Day 14: Dinner will be an own expense meal at a local restaurant

Includes: N/A

Distance/time: ±345km, 5h00 actual driving time, starting the day on rough gravel roads we climb the escarpment for a travel day of ±6h00.

Overnight: [Capbon Guesthouse](#) – twin rooms with en-suite facilities, swimming pool, restaurant & bar. Wifi available.



The employees of Capbon Guesthouse are all local Namibians who have been recruited from the surrounding communities. Capbon Guesthouse minimizes its carbon footprint by employing a 40 kW solar energy plant. This solar plant not only provides electricity to the guesthouse but also contributes excess electricity to the main energy grid of Windhoek city.



Victoria Falls to Windhoek tour ends at +/-08:00am on morning of day 15, see www.sunway-safaris.com for itinerary & price (NBa15).

Day 15 KALAHARI [chalet BLD]

Crossing into Botswana we overnight in the heart of the Kalahari. We take a walk with the local San Bushmen to learn fascinating bush skills and get an insight into how these incredible people survive in this desert environment. Our overnight lodge is owned and operated by the community.

Day 15: Breakfast provided by the guest house

Day 15: Lunch provided by the tour leaders with the help of the group

Day 15: Dinner provided by the tour leaders with the help of the group

Includes:

Nature walk with local San bushman and translator.

Distance/time:

±535km, 6h30 actual driving time. An early start on all tarmac roads, but with a border crossing and lunch stop we expect a total transit day of ±7h30 into the Kalahari.

Overnight:

Ghanzi Trail Blazers chalet – twin rooms with en-suite facilities, swimming pool. No wifi but there is mobile network.



Day 16, 17, 18 OKAVANGO DELTA [tented camp x2 BLD] [tented lodge BL-]

An annual flood of fresh-water spreads into the Kalahari Desert creating the reed lined channels of the Okavango Delta. Our first night is spent in Maun in preparation before journeying deep into the delta on mekoro (dugouts) - an experience not to be missed. We have 2 nights in our tented camp on a remote island and enjoy game walks, swimming and the birdlife in this pristine wilderness area.

Day 16: Breakfast provided by the tour leaders with the help of the group

Day 16: Lunch provided by the tour leaders with the help of the group

Day 16: Dinner will be an own expense meal at a local

Day 17, 18: Breakfast provided by the guest house x 1, by the tour leaders with the help of the group x 1

Day 17, 18: Lunch provided by the tour leaders with the help of the group

Day 17, 18: Dinner provided by the tour leaders with the help of the group

Includes:

Entrance to Okavango Delta, morning and afternoon game walks with local guides.

Distance/time:

Day 16: ±340km, 05h00 actual driving time on a good tarmac road to Maun. After a morning walk, the drive and supply shopping in Maun, it's a travel day of ±6h30.

Day 17: ±50km, 2h00 actual driving time to mekoro station. Mokoro ride to camp is dependent on campsite location so overall travel time for the day ±6h30.

Optional Activities:

Scenic flight over the Okavango Delta.

Overnight:

1 x night Maun [Island Safari Lodge](#), twin share bedrooms with en suite facilities. Swimming pool, bar, restaurant, telephone. Wifi available in main area only.

2 x nights Okavango Delta – [Wilderness tented camping](#) - 2 nights tented camp in the Okavango. Each tent has twin camp beds with linen and an en suite chemical toilet. Shared bucket shower tent with hot water off the fire. Tents have built-in insect nets. We need to take our own water and all equipment. Wild tented camping can be very enjoyable but please remember that we leave no trace of our stay and take all rubbish away with us. The wilderness tented camp supplies all linen blankets and pillows. The camp chairs have a backrest. You will need to bring your own towel. No Wifi.





Island Safari Lodge is Motswana owner managed and the lodge employs 22 Motswanans. They support various Maun based organisations including Rhino Conservation Botswana, Career Dreams Training Institute and the Junior Rangers Programme. The lodge separates all recyclables as well as educating visitors on water conservation. The restaurant serves you Botswana beef!



Day 19 **MAKGADIKGADI PANS** [permanent tent BL-]

Feel the vastness of Africa under a big sky sunset. After the rains, the pans fill with water and attract thousands of water birds and herds of zebra, wildebeest and springbok.

Day 19: Breakfast provided by the tour leaders with the help of the group

Day 19: Lunch provided by the tour leaders with the help of the group

Day 19: Dinner will be an own expense meal

Includes: Entrance fees to Makgadikgadi Pans.

Distance/time: ±360km, 5h30 actual driving time. Starting with a mekoro ride, a 4x4 transfer and then repacking into the safari vehicle it's a big travel day of ±8h00.

Overnight: [Nata Lodge](#) – twin share luxury tents with en suite facilities. Swimming pool, bar, restaurant, telephone. Wifi available at restaurant.



Day 20 **CHOBE NATIONAL PARK** [tented lodge BL-]

We turn north through the Chobe Forest Reserve to Kasane where we settle into our lodge. Chobe NP is famous for large herds of elephant and buffalo. Our afternoon is spent on an exciting wildlife boat cruise in the Chobe NP.

Day 20: Breakfast provided by the tour leaders with the help of the group

Day 20: Lunch provided by the tour leaders with the help of the group

Day 20: Dinner will be an own expense meal

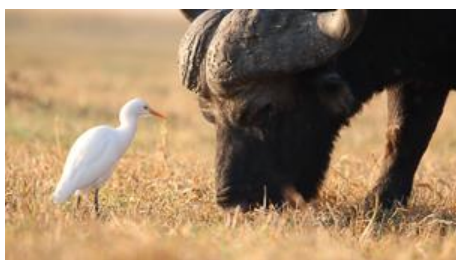
Includes: Sunset game viewing boat cruise on the Chobe River.

Distance/time: ±335km, 4h30 actual driving time. We leave early and aim for a midday arrival. Total travel for the day of ±5h00.

Overnight: [Thebe River Safaris](#) – twin tented rooms with en suite facilities. Swimming pool, bar, restaurant, telephone. Wifi available in main area only.



Thebe River Safaris employs 89 Motswana staff and is Motswana owned and operated. The lodge grows their own vegetables and sources other products locally, all waste is recycled. Although the lodge is situated along a river, visitors are asked to conserve water where possible and LED lights are used throughout the property to conserve energy.



Day 21 ZAMBIA - VICTORIA FALLS [- B--]

This morning we transfer across the Zambezi River to Livingstone where the tour ends at +/-12:00 noon.

Day 21: Breakfast provided by the lodge

Day 21: NA

Day 21: NA

Includes: N/A

Distance/time: ±70km, 1h00 actual driving time. It's not a long way, but the border can be busy and slow so we anticipate a total travel day of ±3h00.

Overnight: N/A

We do a free drop off at Livingstone airport on day 21 at 12:00 so you can book your flight out for the last day of the tour.

Please note: The distance and travel times quoted above are an estimate only, and subject to local road conditions and photo stops!

Please note: That the accommodation specified above and in the itinerary, is a guide only and is subject to availability. Alternatives will be of a similar standard, and accommodation changes will be made without notice.

Special Interest: The Namib Desert, at 55 million years old, is one of the oldest deserts in the world and covers an area of over 80, 00km². It is home to several unusual species including *Stenocara gracilipes* beetle which survives by obtaining water from morning fog settling on its raised body.

Sustainable Tourism: The sausage tree is the traditional tree cut down to make mokoro (dugouts) used in the Okavango Delta, but sadly these trees are disappearing from the region. Sunway has set up a project to encourage the local community polers to buy fiberglass replica mekoros. Sponsorship for each mokoro is needed. If you would like to contribute, please talk to your guide.

2026 PRICES AND DEPARTURE DATES:

RACK Price: (valid Jan 2026 – Dec 2026)

21d € 3 990 pps

Single supplement: € 690 pp (If you are travelling on your own, Sunway will "room" you with another same gender client. You do not pay extra when booking as a single person. If however you request a single room, then you'll pay the single supplement.)

2026 DEPARTURE DATES

| NBa21 Southern Circle | | | NBa15 | | |
|------------------------------|------------------|------------------|------------------|------------------|--------|
| Departs | Ends | | Departs | Ends | |
| LIVINGSTONE | LIVINGSTONE | | LIVINGSTONE | WINDHOEK | |
| Sunday at | Saturday at | | Sunday at | Sunday at | |
| 14:00 pm | 12:00 noon | | 14:00 pm | 08:00 am | |
| BTa | 04-Jan-26 | 24-Jan-26 | 04-Jan-26 | 18-Jan-26 | |
| BTa | 08-Feb-26 | 28-Feb-26 | 08-Feb-26 | 22-Feb-26 | |
| BTa | 15-Mar-26 | 04-Apr-26 | 15-Mar-26 | 29-Mar-26 | |
| | 22-Mar-26 | 11-Apr-26 | 22-Mar-26 | 05-Apr-26 | |
| BTa | 29-Mar-26 | 18-Apr-26 | 29-Mar-26 | 12-Apr-26 | |
| BTag | 03-May-26 | 23-May-26 | 03-May-26 | 17-May-26 | German |
| BTa | 17-May-26 | 06-Jun-26 | 17-May-26 | 31-May-26 | |
| BTag | 31-May-26 | 20-Jun-26 | 31-May-26 | 14-Jun-26 | German |
| BTa | 14-Jun-26 | 04-Jul-26 | 14-Jun-26 | 28-Jun-26 | |
| BTa | 21-Jun-26 | 11-Jul-26 | 21-Jun-26 | 05-Jul-26 | |
| BTa | 28-Jun-26 | 18-Jul-26 | 28-Jun-26 | 12-Jul-26 | |
| BTa | 05-Jul-26 | 25-Jul-26 | 05-Jul-26 | 19-Jul-26 | |
| BTa | 12-Jul-26 | 01-Aug-26 | 12-Jul-26 | 26-Jul-26 | |
| BTa | 19-Jul-26 | 08-Aug-26 | 19-Jul-26 | 02-Aug-26 | |
| BTa | 26-Jul-26 | 15-Aug-26 | 26-Jul-26 | 09-Aug-26 | |
| BTag | 02-Aug-26 | 22-Aug-26 | 02-Aug-26 | 16-Aug-26 | German |
| BTa | 09-Aug-26 | 29-Aug-26 | 09-Aug-26 | 23-Aug-26 | |
| BTa | 16-Aug-26 | 05-Sep-26 | 16-Aug-26 | 30-Aug-26 | |
| BTag | 23-Aug-26 | 12-Sep-26 | 23-Aug-26 | 06-Sep-26 | German |
| BTa | 30-Aug-26 | 19-Sep-26 | 30-Aug-26 | 13-Sep-26 | |
| BTa | 06-Sep-26 | 26-Sep-26 | 06-Sep-26 | 20-Sep-26 | |
| BTag | 13-Sep-26 | 03-Oct-26 | 13-Sep-26 | 27-Sep-26 | German |
| BTa | 20-Sep-26 | 10-Oct-26 | 20-Sep-26 | 04-Oct-26 | |



| | | | | | | |
|-------------|------------------|------------------|--------|------------------|------------------|--------|
| BTa | 27-Sep-26 | 17-Oct-26 | | 27-Sep-26 | 11-Oct-26 | |
| BTag | 04-Oct-26 | 24-Oct-26 | German | 04-Oct-26 | 18-Oct-26 | German |
| BTa | 11-Oct-26 | 31-Oct-26 | | 11-Oct-26 | 25-Oct-26 | |
| BTa | 18-Oct-26 | 07-Nov-26 | | 18-Oct-26 | 01-Nov-26 | |
| BTa | 25-Oct-26 | 14-Nov-26 | German | 25-Oct-26 | 08-Nov-26 | German |
| BTa | 01-Nov-26 | 21-Nov-26 | | 01-Nov-26 | 15-Nov-26 | |
| BTa | 08-Nov-26 | 28-Nov-26 | | 08-Nov-26 | 22-Nov-26 | |
| BTag | 15-Nov-26 | 05-Dec-26 | German | 15-Nov-26 | 29-Nov-26 | German |
| BTa | 06-Dec-26 | 26-Dec-26 | | 06-Dec-26 | 20-Dec-26 | |
| BTa | 20-Dec-26 | 09-Jan-27 | | 20-Dec-26 | 03-Jan-27 | |

* **Bold dates** are guaranteed departures, all other dates guaranteed from 4 clients.

* **German:** These tours have a German speaking translator/tour leader.

* **BTa:** These tours can be linked after the Botswana Wildparks 14day accommodated safari.

NBa21 Livingstone to Livingstone

€ 3 990 pps

Single supplement: € 690 pp

NBa15 Livingstone to Windhoek

€ 3 170 pps

Single supplement: € 520 pp

DETAILED TOUR INFORMATION:

In a nutshell

- A true exploration of Namibia, Botswana - see it all!
- All-inclusive trip with cultural experience, adventure and wildlife.
- Victoria Falls, Caprivi, Etosha, Damaraland, Namib Desert, Kalahari, Okavango Delta & Chobe.

Why travel with Sunway Safaris

We understand that there are several options available to you when choosing your African safari. We also know that you want to make the most informed decision about your safari, what you get, what's included and what you see and experience. So these are just a few of the Sunway qualities and facts:

- **Small groups** – by travelling with a maximum of 12 people, you can witness Africa and have first-hand contact with this amazing continent and its people without being a negative influence. This has been a key factor in our continued success. Our trips appeal to a wide demographic of traveller. Our clients range in age from 25 to 65+ with the average being 45. The range of travellers gives a variety of perspectives which adds to the experience of each safari.
- **2 Sunway tour guides** – group leaders are the key to any safari. On a Sunway safari you will travel with 2 qualified and registered field guides (Field Guides Association of SA). Two guides as crew, not a guide and a driver, means interesting trips with maximum knowledge and information. Our guides have a passion for Africa, her people and her wildlife, and they love nothing more than sharing their knowledge with you.
- **Guaranteed departures** – departure dates on each itinerary shown as bold are guaranteed departure dates. All other departures operate with a minimum of 4 clients.
- **All inclusive price** – when we travel ourselves, we always feel that if we're in a country we should find and see the best it has to offer. So when planning the Sunway routes we ensure that each trip provides the best inclusions and experiences. For example, if you go to Botswana – you have to visit the national parks in an open 4WD – it is the essence of the Botswana wilderness. If you tour Zambia, then you must visit South Luangwa NP and do a game walk with a local scout. When booking on a Sunway Safari there are no hidden costs. All of the entrance fees are included, and a wide range of activities, and most meals. We have included many highlights in our tours, so that you will see and experience the highlights without having to pay extra when you get there. So when you decide on which safari company to book with, look carefully at what you're actually getting. You may only visit a place once, make sure you get the most out of it.
- **Safety** – our fleet of vehicles are custom built to ensure comfortable and safe touring. Each is constructed, by an authorised passenger vehicle builder, to the latest safety requirements, with a safety shell, and every seat has a lap belt. This gives you peace of mind when travelling with Sunway Safaris on the often demanding African roads.
- **Good2Go** - Our commitment to sustainable & responsible tourism is reflected in our low impact travel style where all we take is photographs and all we leave is our footprints. Being an African company we have the grassroots contacts to make a real difference in the lives of the people whose lands we visit. On each itinerary in the brochure you'll find this symbol which highlights just one of the sustainable travel initiatives that we support.



- **Solo Travellers** – going it alone won't make your holiday more expensive; our reservations staff will match you up with another same-gender traveller to keep your holiday affordable. If however you request a single room or tent these are available, with a price supplement
- **Experience** - we have more than 31 years' experience planning tours throughout Southern Africa. As such, our itineraries and routes have been perfected over many years ensuring that your tour will run smoothly. We visit the highlights of Southern Africa but ensure that you do not follow the well-trodden tourist track. All of us at Sunway Safaris have extensive travel experience in Africa, and throughout the world. Being adventure travellers ourselves, we know how to plan trips that give you a broad experience of the countries that you will visit.
- **Based in Africa** - probably the most important part of a Sunway safari is that we are an African company with offices in South Africa and Botswana. We live in Africa, we travel in Africa and it is our passion for this amazing continent that makes Sunway your best travel option.
- **Age Policy** - On all scheduled tours, we accept children 12-17 with accompanying adult. We have no upper age limit. Clients older than 65 years of age at time of travel require a medical certificate stating the client is fit and healthy to join an adventure travel group tour. We have many clients over 65 years of age, who are perfectly capable of enjoying every aspect of a Sunway tour, both accommodated and camping. For more details contact marketing@sunway-safaris.com.

SOS trees project – Okavango Botswana

- For hundreds of years, the local communities in and around Botswana's Okavango Delta have used the wood of the sausage tree to craft their traditional mokoro (dugout canoes). The knowledge and skill have been passed down from generation to generation and, up until recently, has been a sustainable practice. With increasing numbers of people visiting the Delta each year, more mokoro are needed and as a direct result, more and more sausage trees are being felled and the sausage tree is sadly disappearing from the region. A traditional wooden mokoro will have to be replaced every five years, thereby placing increased pressure on the dwindling sausage tree supply.

Sunway Safaris has established a project to encourage polers in the local communities to buy replica fibreglass mokoro's, which have a lifespan of approximately ten years, are more stable and are produced without any negative affect to the environment. As such, sponsorship for each fibreglass mokoro is needed, and a portion of the tour cost will be donated to the project, but we also will offer our clients the opportunity to contribute to this worthwhile cause. Please feel free to contact the Sunway Safaris office for more information on the SOS Trees project or if you would like to make any contributions towards this project. It is something that is close to all of our hearts and we hope that it will be successful.

Local Payment

- There is no local payment required on this safari.

Recommended reading

Before you travel you might want to read any of the following books. While not specific to the Sunway tour you will join, they do provide some background understanding of the countries you will be visiting.

- Sands of Silence by Peter H Capstick
- Skeleton Coast by John H Marsh (Wreck of the Dunedin Star and its survivors)
- The Skeleton Coast by Benedict Allen (A journey through the Namib Desert)
- The Smell of Apples by Mark Behr (Story of boy in Cape Town by then army on Caprivi)
- Etosha by Daryl and Sharna Balfour (A coffee table book of photography)
- Long Walk to Freedom by Nelson Mandela (Autobiography - Nelson Mandela is one of the great moral and political leaders of our time.)
- #1 Ladies Detective Agency by Alexander McCall Smith (Fictional story of life in Botswana)
- Trees of the Okavango by Veronica Roodt (A reference book with traditional uses and myths)
- Okavango: Jewel of the Kalahari by Karen Ross (A comprehensive description of the Delta ecology)
- Don't run whatever You Do by Peter Allison (A guide's perspective of Botswana lodge life)
- Okavango: Africa's Last Eden by Frans Lanting (A coffee table book of photography)
- Newman's Birds of Southern Africa by Kenneth Newman
- Sasol Birds of Southern Africa by Ian Sinclair, Phil Hockey, and W.R. Tarboton
- The Safari Companion: A Guide to Watching African Mammals Including Hoofed Mammals, Carnivores, and Primates by Richard D. Estes and Daniel Otte
- Field Guide to Trees of Southern Africa (Field Guides) by Braam Van Wyk, Keith Coates Palgrav, and Piet Van Wyk

Shopping

- Craft shopping for carvings, batiks, paintings and clothing is best in Livingstone, Zambia which has a wide variety of curios. Botswana has beautiful grass weavings. Namibia also has unusual and interesting curios and crafts. If you see something you like, it is best to buy it because it is unlikely that you will see something similar further along. Crafts change from region to region.

Food

- We pride ourselves on giving very good healthy meals to our clients and will provide three meals per day, except where shown in the itinerary, when we try out local restaurants.

- The tour leaders do the shopping and meal planning for each group. He/she will always try to obtain fresh produce wherever possible. A rough idea of what these will consist of is: Breakfast - cereals or coffee and toast or the occasional fried breakfast, Lunch - cheese, cold meats, salads on bread or rolls, Dinner - braais (local barbecue), potjies (stews), stir-fries etc. We use regular plates, cups and cutlery. All cooking and eating utensils will also be provided.
- Please be aware that, due to the diverse tastes of our clients, we are unable to accommodate individual food preferences on our group tours. The group shared meals we provide are subject to available produce, and in our sometimes-remote destinations, the variety of ingredients is sometimes limited. However, we do take allergies, vegetarian and vegan dietary requirements into consideration to ensure everyone has suitable meal options.
- We will supply fruit squash served with breakfast and tea or coffee served with breakfast and dinner. All other beverages will be for your own expense. We will not supply bottled drinking water although it is available at many shops on tour.

Difficulty

- Anyone who is generally active and in good health should enjoy this trip. The outdoor enthusiast enjoys simple campsites and basic wild camps, you will get dusty on occasion; but this is Africa!
- Full itinerary with a couple of long driving days, but also plenty of outdoor activity with some relaxing time. This is a long-distance trans-Africa safari - there is a lot of distance to be covered and so there will be some long travelling days. Due to local conditions, border crossings, road detours and weather, the trip may alter route / schedule - please remember that this continent has its own time scale and things work differently here. Keep an open mind and a sense of humour - it's all part of the adventure!
- Everyone is asked to help out with the running of camp on tour. In other words if everyone spends a little time setting up camp, preparing meals and cleaning up then the tour will run smoothly and everyone will have a good time. Participation is the name of the game.

Things you should know

- Includes park entrances, game drives and the Okavango Delta excursion.
- Your client will need a valid passport and visas for entry into Namibia, Botswana and Zambia.
- Luggage, please pack to a limit of 12kgs in a soft sports tog bag. Also bring a daypack for walks and keeping in the vehicle. On the Accommodated Adventures & Classic Journeys, all bedding is provided, and you will not be required to bring a sleeping bag or pillow. At most accommodation establishments towels will be provided, but it is always a good idea to bring a small travel towel for the beach or swimming pool.
- For the Okavango Delta wilderness camp, you need to re-pack clothes and personal items for the two nights into your daypack, as space on the mokoros is limited. Your main bag will remain in Maun. Please make sure to bring a small towel with you as there are no towels supplied for these two nights.
- We recommend that you bring a small amount of Euro, US\$ or South African Rand for personal expenses on this trip but please note that in Namibia Euro and US\$ will need to be changed into Namibian \$ or South African Rand as shops, restaurants and market vendors only accept N\$ and ZAR. In Botswana please note that foreign currency will need to be changed into Botswana Pula as shops, restaurants and market vendors only accept BWP. Mastercard and Visa credit cards can also be used for restaurants, shops and optional activities throughout the tour. Zambia requires that all services are paid in the local currency, however major credit cards (Mastercard / Visa) can also be used for optional activities in Livingstone. See the Sunway tour dossier for approximate costs of drinks and meals etc.

Common questions about this trip

1. **Is it safe?** South Africa, Namibia, Botswana and Zambia are relatively safe and your guide knows the countries intimately and will endeavour to show you the best parts while looking after you. In the wild areas, your guide will brief you on the necessary precautions, follow this advice and you will be fine. Be aware of your personal belongings and you will have a great trip! Every precaution is taken to ensure a happy holiday.
2. **Do I need malaria tablets?** Yes, the trip passes through malaria areas and prophylactics are recommended.
3. **What do I need to bring?** All details are covered in our general tour briefing (available from www.sunway-safaris.com home page) but the basics are: - comfortable clothes for warm days and cool evenings, walking shoes, a raincoat, hat and sunglasses, swimsuit, a small pair of binoculars also comes in very handy and most importantly - a sense of adventure!

