

Tour code:

**ZBa16
2026**

Guaranteed departures

Small group safari maximum: **12 travellers**

Travel through:

Zimbabwe, Botswana & South Africa

Safari length:

16 days

ZIMBABWE & BOTSWANA "GAME TRACKER"

Explore Southern Africa's diverse landscapes and iconic highlights on this Zimbabwe, Botswana and South Africa safari. Search for wildlife in Kruger, Hwange and Chobe national parks, glide through the Okavango Delta in mekoros, and walk through the dramatic granite hills of Matobo. Discover the ancient Great Zimbabwe ruins and experience the raw power of Victoria Falls. With comfortable accommodation and a rich mix of game viewing, culture and scenery, this journey offers an unforgettable Southern African adventure.

DEPARTS: JOHANNESBURG on Saturday at 06:30am**ENDS:** JOHANNESBURG on Sunday at +/-18:00pm

Highlights

- * Kruger National Park – game drives
- * Great Zimbabwe Monuments – guided tour
- * Matobos – game drive
- * Hwange – game drives in an open vehicle
- * Victoria Falls – adventure activities
- * Chobe National Park – sunset river cruise
- * Okavango Delta - mokoro excursion



SAFARI STYLE: ACCOMMODATED

ZBa16 Johannesburg to Johannesburg circular route with simple in'tl flights & includes a chance to see rhino.

ZBa15 Johannesburg to Maun offers the opportunity to fly out of Maun on day 15 and avoid the drive back to Johannesburg.

Overnight 12 nights on safari we stay at small lodges, with en suite facilities and 1 night in Goo-Moremi, in self-catering chalets where two bedrooms share a bathroom. And 2 nights tented camp in the Okavango. Each tent has twin camp beds with linen and en suite chemical toilet. Shared bucket shower tent with hot water off the fire.

Meals 15 breakfasts, 13 lunches and 11 dinners are included. Of which 8 breakfasts & 4 dinners are provided by the lodges. The remaining included meals are prepared by Sunway crew at the vehicle and enjoyed around the campfire.

Transport for the majority of this safari you travel in a custom-built Sunway Safari trucks with 12 forward facing seats; or (on 40% of tours) Mercedes Sprinter minibuses with 12 forward facing seats and air conditioning. For the game drives in Chobe, Hwange, Matobos and the transfer into the Okavango we use local open sided 4WD vehicles with local guides.

Limited participation An essential part of your safari is some participation. From carrying your own bag to cleaning your window and packing the truck in the morning – it's all part of your adventure and when everyone puts in a little effort the trip will run smoothly. Where the tour leaders provide meals, we ask that clients help (on rotation) with the washing up.



ACCOMMODATED ITINERARY

Day 1 **KRUGER NATIONAL PARK** [chalet - LD] (B=breakfast, L=lunch, D=dinner)

Departing Johannesburg at 06:30am we head into the world famous Kruger National Park. We visit the northern part of the park and stay in the Letaba area of the reserve. We enjoy an afternoon game drive in our safari vehicle and hope to spot lion, elephant, rhino and other animals in this icon of wildlife conservation.


Day 1: Breakfast is not included

Day 1: Lunch provided by the tour leaders with the help of the group

Day 1: Dinner provided by the tour leaders with the help of the group

Includes: Entrance to Kruger National Park & afternoon game drive.

Distance/time: ±580km, 8h00 actual driving time. It's a long day to start the trip, but we want to get into Kruger for an afternoon game drive, so with stops and lunch, we expect a total travel day of ±10h30.

Overnight: [Kruger National Park Chalets](#) – we stay in national parks board chalets. 1 night Letaba – twin en suite chalets, swimming pool & restaurant. Wifi available at fee. 



Day 2 **KRUGER NATIONAL PARK** [tented lodge BLD]

This morning we wake early and game drive north through the park to the Pafuri region. The northern Kruger is dominated by mopane veld and is the domain of large elephant bulls, wild dogs and lions. As we reach the Limpopo Valley the vegetation changes to forest and birdlife is prolific. We exit the park, late in the afternoon, and overnight at a lodge just outside the Kruger.


Day 2: Breakfast provided by the tour leaders with the help of the group

Day 2: Lunch provided by the tour leaders with the help of the group

Day 2: Dinner will be a set meal provided by the lodge

Includes: Entrance to Kruger National Park and full-day game drive.

Distance/time: ±250km, 6h30 actual driving time which is a full day game drive through Kruger so with a restful lunch break midday it's a total travel day of ±9h00 (subject to gate closing times).

Overnight: [Awelani Lodge](#) – en suite tents, restaurant. Awelani Eco-Tourism Park is owned and run by the local Mutele community. Wifi available. 



Awelani Lodge is owned by the local community and run for their benefit, with 95% of the staff employed from the local area. They use borehole water and food is sourced locally. They give 1% of revenue to the community trust that has projects focusing on local education, health and child welfare.




Day 3 **GREAT ZIMBABWE** [hotel BLD]

Entering Zimbabwe at the Beit Bridge border post, we travel north to our overnight stop. The following morning we visit the Great Zimbabwe Monuments. These well preserved ruins are some of the oldest and largest stone structures in Southern Africa and were built during the 11th to 14th centuries. We explore these ancient stone structures on an informative walk with a local guide.

Day 3: Breakfast will be provided by the lodge

Day 3: Lunch provided by the tour leaders with the help of the group

Day 3: Dinner will be a set meal provided by the lodge

Includes: Entrance and guided tour of the Zimbabwe Ruins.
Distance/time: ±450km, 6h30 actual driving time. We need to get to Beitbridge border post as early as possible and depending on the border today (which can be slow) should be less than a ±8h30 travel day.
Overnight: [Great Zimbabwe Hotel](#) – hotel, twin rooms with en-suite facilities, restaurant & bar. 
Wifi available.



Great Zimbabwe Hotel has 39 Zimbabwean staff. The hotel supports a local clinic and sponsors a primary school in the area to help support their community. Seasonal fruit and vegetable are bought from local communities. They plant indigenous trees in the gardens and participate in the weekly national Clean Up Campaign.



Day 4 -5 MATOBO NATIONAL PARK [chalet BLD]

Travelling via the city of Bulawayo we move on to the Matobo National Park and our chalets on the outskirts of the park. This afternoon we enjoy sundowners from the granite ridge overlooking the park. The following morning we visit World's View and the historical site of Cecil John Rhodes' grave. Unusual rock formations are home to an array of ancient bushman paintings which we visit while on our game drive and walk. This area is also home to Zimbabwe's rhino which we hope to see on our excursion in the national park.

Day 4: Breakfast provided by the hotel


Day 4: Lunch provided by the tour leaders with the help of the group

Day 4: Dinner will be a set meal provided by the lodge

Day 5: Breakfast will be provided by the lodge

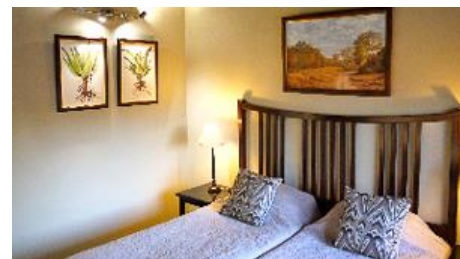
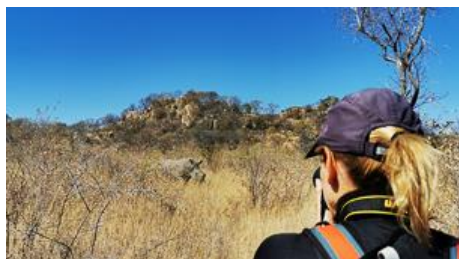
Day 5: Lunch provided by the tour leaders with the help of the group

Day 5: Dinner will be a set meal provided by the lodge

Includes: Entrance to Matobo National Park and game walk.
Distance/time: ±360km, 5h00 actual driving time. Rolling hills, a few roadblocks and a lunch stop should mean a travel day of ±6h30.
Overnight: Hermits Peak – chalets - twin rooms with en-suite facilities (hot showers), swimming pool. Satellite Wifi available. 



Hermits Peak is 100% Zimbabwean owned and employs 6 Zimbabweans. John, the owner is chairman of The Matobo Rhino Trust and works with National Parks Board in Zimbabwe on rhino protection and conservation. They train and mentor local community members to become guides or otherwise involved in the tourism industry.



Day 6 - 7 HWANGE NATIONAL PARK [chalet BLD]

Named after a local Nhanzwa chief, Hwange National Park is the largest Park in Zimbabwe occupying roughly 14 650 square kilometers. Hwange is famed for its large elephant population. Our chalets are in the game management area that borders the park, and we explore the park with our local guide, on a full day game drive in an open 4WD game viewing vehicle.

Day 6: Breakfast will be provided by the lodge


Day 6: Lunch provided by the tour leaders with the help of the group

Day 6: Dinner provided by the tour leaders with the help of the group

Day 7: Breakfast will be provided by the tour leaders with the help of the group

Day 7: Lunch provided by the tour leaders with the help of the group

Day 7: Dinner provided by the tour leaders with the help of the group

Includes: Entrance fees, full day game drive in open 4WD game viewing vehicle.
Distance/time: ±340km, 5h00 actual driving time, with an early start and tarmac roads we aim to arrive for lunch with a total travel day of ±5h30.
Overnight: [Miombo Safari Lodge](#) – for 2 nights at Hwange National Park, we stay in twin chalets with en-suite facilities, swimming pool and central boma area. Wifi available at fee. 



Day 8 - 9 VICTORIA FALLS [guest house B--]

We enjoy a spectacular guided walk through tropical vegetation to the very edge of the “Mosi oa Tunya” or “the smoke that thunders” - Victoria Falls. There are opportunities to white water raft on the mighty Zambezi River, bungee jump or take a “flight of angels” (own expense).

Day 8: Breakfast will be provided by the tour leaders with the help of the group


Day 8: Lunch will be an own expense meal

Day 8: Dinner will be an own expense meal at a local restaurant

Day 9: Breakfast will be provided by the guest house

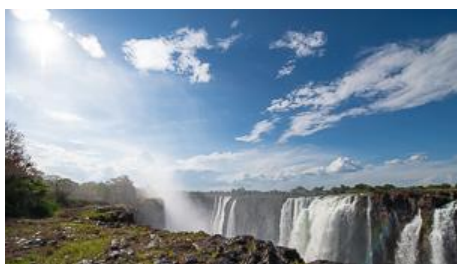
Day 9: Lunch will be an own expense meal

Day 9: Dinner will be an own expense meal at a local restaurant

Includes: Entrance Fees to see the Victoria Falls.
Distance/time: ±190km, 3h00 actual driving time, with a visit to the Painted Dog Sanctuary, we expect to be in Vic Falls for lunch, a total travel day of ±4h00.
Optional Activities: White water rafting, sunset cruises, scenic flights & many more.
Overnight: [Phezulu Guest Lodge](#), twin rooms with en-suite facilities. Swimming pool, restaurant, bar and telephone. Wifi available. 



Bayete & Phezulu Guest Lodges are 100% Zimbabwean owned. The lodges catch rainwater in tanks for use and grey water is used in the gardens. Food is sourced locally as far as possible & all waste is recycled. The lodges support Children in the Wilderness, Greenline Africa and are part of Green Tourism.



Day 10 CHOBE NATIONAL PARK [tented lodge BLD]

Entering Botswana, we head to the town of Kasane and our accommodation on the banks of the Chobe River. The river flows lazily along the northern boundary of the Chobe National Park attracting some of the largest herds of elephant in Africa. A highlight of any trip to the Chobe is the afternoon game viewing cruise where we hope to see large herds of elephants and other wildlife as they quench their thirst at the end of the day.

Day 10: Breakfast will be provided by the guest house

Day 10: Lunch provided by the tour leaders with the help of the group

Day 10: Dinner provided by the tour leaders with the help of the group

Includes: Chobe N.P entrance fees & sunset cruise on Chobe River.
Distance/time: ±85km, 1h00 actual driving time, the border crossing is relatively fast and we aim to be in Botswana before midday for a less than ±3h00 travel day.
Optional Activities: N/A

Overnight:

[Thebe River Safaris](#) – twin tented rooms with en suite facilities. Swimming pool, bar, restaurant, telephone. Wifi available in main area only.



Thebe River Safaris employs 89 Motswana staff and is Motswana owned and operated. The lodge grows their own vegetables and sources other products locally, all waste is recycled. Although the lodge is situated along a river visitors are asked to conserve water where possible and LED lights are used throughout the property to conserve energy.



Day 11 **NATA** [tented lodge BL-]

This morning we venture into the Chobe National Park in an open 4WD in search of big cats and elephants. Thereafter we head south through the Kasane Forest Reserve to the Nata area for our overnight stop. In the late afternoon we visit Nata Sanctuary for sunset and look out across the expanse of the Makgadikgadi Pans. During dry months, the pans appear as endless white expanses, while summer rains create shallow waters that attract flamingos, pelicans, and migratory herds.

Day 11: Breakfast will be provided by the lodge

Day 11: Lunch provided by the tour leaders with the help of the group

Day 11: Dinner will be an own expense meal at a local restaurant

Includes:

Morning game drive and entrance fees to Makgadikgadi Pans.

Distance/time:

±340km, 4h30 actual driving time. Departing after a morning game drive, with lunch en route it's an easy travel day of ±5h30.

Overnight:

[Nata Lodge](#) – twin share luxury tents with en suite facilities. Swimming pool, bar, restaurant, telephone. Wifi available at restaurant.



Day 12 – 14 **OKAVANGO DELTA** [2x tented camping, 1x chalet Bx3 Lx3 Dx2]

We transfer into the delta by open 4WD game viewing vehicle. Our local guides will take us deep into the heart of the Okavango Delta on Mokoro (dugout canoes) to our pre-erected tented camp. The delta forms as rainwater from the Angolan highlands flows out over the flat Kalahari Desert sands, forming a delicate, green oasis for birds and wildlife. Our camp is on a remote island in this amazingly dynamic environment and we enjoy bush walks, bird watching and swimming in the clear waters. Camping with our local guides we learn more about their lifestyle and culture. Returning to Maun in the afternoon of day 14 there is time for an optional scenic flight over the Okavango (own expense).

Day 12: Breakfast provided by the tour leaders with the help of the group

Day 12: Lunch provided by the tour leaders with the help of the group

Day 12: Dinner provided by the tour leaders with the help of the group

Day 13: Breakfast will be provided by the tour leaders with the help of the group

Day 13: Lunch provided by the tour leaders with the help of the group

Day 13: Dinner provided by the tour leaders with the help of the group

Day 14: Breakfast will be provided by the tour leaders with the help of the group

Day 14: Lunch provided by the tour leaders with the help of the group

Day 14: Dinner will be an own expense meal at a local restaurant

Includes:

Entrance to Okavango Delta, Mokoro excursion, morning and afternoon game walks with local guides.

Distance/time:

±340km, 4h30 actual driving time, followed by a 4x4 transfer and then a mekoro trip for a total travel day of ±7h00.

±50km, 2h00 actual driving time from mekoro station to Maun. Depending location of delta camp, the travel day is approximately ±3h30 including mekoro.

Optional Activities: Scenic flight over the Okavango Delta.

Overnight:

2 x nights Okavango Delta – wilderness tented camping - 2 nights tented camp in the Okavango. Each tent has twin camp beds with linen and an en suite chemical toilet. Shared bucket shower tent with hot water off the fire. Tents have built-in insect nets. We need to take our own water and all equipment. Wild tented camping can be very enjoyable but please remember that we leave no trace of our stay and take all rubbish away with us. The wilderness tented camp supplies all linen blankets and pillows. The camp chairs have a backrest. You will need to bring your own towel. Wifi not available.

1x night Maun Island Safari Lodge, chalet - twin share bedrooms with en suite facilities. Swimming pool, bar, restaurant, telephone. Wifi available in main area only.



The Okavango Kopano Mokoro Community Trust is run by the communities on the south eastern sector of the Okavango Delta with entrance and camping fees paid to the trust, and wages paid directly to the individual guides/polers. Work is split between community members on a rotation basis administered by each village. By working with these communities, we help provide sustainable economic benefit for the conservation of the area. Please also see the Sunway SOS Save Our Sausage Trees project.



Island Safari Lodge is Motswana owner-managed and the lodge employs 22 Motswanans. They support various Maun based organisations including Rhino Conservation Botswana, Career Dreams Training Institute and the Junior Rangers Programme. The lodges separates all recyclables as well as educating visitors on water conservation. The restaurant serves you Botswana beef!



You can end this tour on day 15 at 08:00am after breakfast to catch flights from Maun to Johannesburg. Thus avoid two long travel days back to Johannesburg
See www.sunway-safaris.com for itinerary and price (ZBa15)

Day 15 **GOO MOREMI GORGE** [chalet BLD]

Heading south from Maun, we cross the wide open spaces of the Kalahari Desert. Along the route we might encounter small herds of zebra interspersed among cattle herds between remote villages. As we approach Goo-Moremi the Tswapong Hills rise above the horizon. Here endangered Cape Vultures nest on the gorge cliffs above the ancestral waterfalls in the protected conservation area of Goo-Moremi Gorge. Time permitting we take an afternoon guided walk to stretch our legs.

Day 15: Breakfast will be provided by the lodge

Day 15: Lunch provided by the tour leaders with the help of the group

Day 15: Dinner provided by the tour leaders with the help of the group

Includes:

Entrance fees and afternoon guided walk.

Distance/time:

±665km, 8h30 actual driving time. Botswana is flat, and today we can prove that - total travel day of ±9h30.

Overnight:

[Goo Moremi Resort](#), 2 twin share bedrooms in each chalet with 1 bathroom shared between 2 rooms. Wifi available at restaurant.



Goo Moremi Gorge is a Community based cultural and heritage lodge managed by the Moremi-Manonnye Conservation Trust in partnership with the Botswana Tourism Organisation. 100% Motswana staff are led by the chief warden and the gorge is home to a nesting site of the endangered Cape Vulture.



Day 16 JOHANNESBURG – TOUR ENDS [- B--]

Crossing back into South Africa, we make our way to Johannesburg where the tour ends at +/- 18:00.

Day 16: Breakfast will be provided by the tour leaders with the help of the group

Day 16: Lunch own expense meal

Day 16: N/A

Includes: N/A

Distance/time: ±515km, 6h30 actual driving time, so an early start with a border crossing and lunch stop, we expect a total travel day of ±8h30.

Optional Activities: N/A

Overnight: N/A

Please note: we do a free drop off at Johannesburg airport on day 16 at 17:00pm so you can book your flight out for the last day of the tour.

Please Note: The distance and travel times quoted above are an estimate only, and subject to local road conditions and animal sightings!

Please note: That the accommodation specified above and in the itinerary, is a guide only and is subject to availability. Alternatives will be of a similar standard, and accommodation changes will be made without notice.

Special Interest: Great Zimbabwe Monuments is a UNESCO World Heritage site and its massive curving walls (some 11m high), constructed from millions of granite blocks fitted together without mortar, remain the largest ancient stone structure in sub-Saharan Africa. The city had an estimated 18,000 inhabitants and archaeological artefacts including Chinese pottery shards and coins from Arabia suggest a vast trading network.

Sustainable Tourism: Zimbabwe has for many years been off the tourist chart. Conservation has been a challenge for many Zimbabweans working in the national parks and on private land. In Matobos and Hwange national parks we use locally owned camps, operators and guides. Bringing tourist revenue back to the people on the ground will help support the protection of these beautiful wildlife regions.

2026 PRICES AND DEPARTURE DATES:

RACK Price: (valid Jan 2026 – Dec 2026)

€ 3 180 pps + local payment of US\$ 300

Single supplement: € 700 pp (If you are traveling on your own, Sunway will "room" you with another same gender client. You do not pay extra when booking as a single person. If however you request a single room, then you'll pay the single tent supplement.)

2026 DEPARTURE DATES

ZBa16 Zimbabwe Botswana Game Tracker

Departs	Ends	
JOHANNESBURG	JOHANNESBURG	
Saturday at	Sunday at	
06:30am	18:00pm	
03-Jan-26	18-Jan-26	
10-Jan-26	25-Jan-26	
31-Jan-26	15-Feb-26	
07-Feb-26	22-Feb-26	German
21-Feb-26	08-Mar-26	
14-Mar-26	29-Mar-26	German
28-Mar-26	12-Apr-26	
04-Apr-26	19-Apr-26	
11-Apr-26	26-Apr-26	
25-Apr-26	10-May-26	German
02-May-26	17-May-26	
09-May-26	24-May-26	
16-May-26	31-May-26	



30-May-26	14-Jun-26	
06-Jun-26	21-Jun-26	
13-Jun-26	28-Jun-26	German
20-Jun-26	05-Jul-26	
27-Jun-26	12-Jul-26	
04-Jul-26	19-Jul-26	
11-Jul-26	26-Jul-26	
18-Jul-26	02-Aug-26	
25-Jul-26	09-Aug-26	
01-Aug-26	16-Aug-26	German
08-Aug-26	23-Aug-26	
15-Aug-26	30-Aug-26	
22-Aug-26	06-Sep-26	
29-Aug-26	13-Sep-26	German
05-Sep-26	20-Sep-26	
12-Sep-26	27-Sep-26	German
19-Sep-26	04-Oct-26	
26-Sep-26	11-Oct-26	
03-Oct-26	18-Oct-26	German
10-Oct-26	25-Oct-26	
17-Oct-26	01-Nov-26	
24-Oct-26	08-Nov-26	
31-Oct-26	15-Nov-26	German
07-Nov-26	22-Nov-26	
14-Nov-26	29-Nov-26	
21-Nov-26	06-Dec-26	
19-Dec-26	03-Jan-27	

* **Bold dates** are guaranteed departures; all other dates are guaranteed from 4 clients.

* **German:** These tours have a German speaking translator/tour leader.

ZBa16 Johannesburg to Johannesburg

€ 3 180 pps + local payment of US\$ 300

Single supplement: € 700 pp

ZBa15 Johannesburg to Maun

€ 2 970 pps + local payment of US\$ 300

Single supplement: € 680 pp

DETAILED TOUR INFORMATION:

In a nutshell


- A true African experience - wild and free!
- All-inclusive trip with cultural experience, adventure and wildlife.
- Kruger National Park, Great Zimbabwe Ruins, Matobos National Park, Hwange National Park, Victoria Falls, Chobe National Park & the Okavango Delta.

Why travel with Sunway Safaris

We understand that there are several options available to you when choosing your African safari. We also know that you want to make the most informed decision about your safari, what you get, what's included and what you see and experience. So, these are just a few of the Sunway qualities and facts:

- **Small groups** – by travelling with a maximum of 12 people, you can witness Africa and have first-hand contact with this amazing continent and its people without being a negative influence. This has been a key factor in our continued success. Our trips appeal to a wide demographic of traveller. Our client's range in age from 25 to 65+ with the average being 45. The range of travellers gives a variety of perspectives which adds to the experience of each safari.
- **2 Sunway tour guides** – group leaders are the key to any safari. On a Sunway safari, you will travel with 2 qualified and registered field guides (Field Guides Association of SA). Two guides as crew, not a guide and a driver, means interesting trips with maximum knowledge and information. Our guides have a passion for Africa, her people and her wildlife, and they love nothing more than sharing their knowledge with you.
- **Guaranteed departures** – departure dates on each itinerary shown as bold are guaranteed departure dates. All other departures operate with a minimum of 4 clients.
- **All-inclusive price** – when we travel ourselves, we always feel that if we're in a country we should find and see the best it has to offer. So, when planning the Sunway routes, we ensure that each trip provides the best inclusions and experiences. For example, if you go to Botswana – you must visit the national parks in an open 4WD – it is the essence of the Botswana wilderness. If you tour Zambia, then you must visit South Luangwa NP and do a game walk with a local scout. When booking on a Sunway Safari there

are no hidden costs. All the entrance fees are included, and a wide range of activities, and most meals. We have included many highlights in our tours so that you will see and experience the highlights without having to pay extra when you get there. So, when you decide on which safari company to book with, look carefully at what you're actually getting. You may only visit a place once, make sure you get the most out of it.

- **Safety** – our fleet of vehicles are custom built to ensure comfortable and safe touring. Each is constructed, by an authorised passenger vehicle builder, to the latest safety requirements, with a safety shell, and every seat has a lap belt. This gives you peace of mind when travelling with Sunway Safaris on the often demanding African roads.
- **Good2Go** - Our commitment to sustainable & responsible tourism is reflected in our low impact travel style where all we take is photographs and all we leave is our footprints. Being an African company, we have the grassroots contacts to make a real difference in the lives of the people whose lands we visit. On each itinerary in the brochure, you'll find this symbol which highlights just one of the sustainable travel initiatives that we support. 
- **Solo Travellers** – going it alone won't make your holiday more expensive; our reservations staff will match you up with another same-gender traveller to keep your holiday affordable. If, however you request a single room or tent these are available, with a price supplement
- **Experience** - we have more than 31 years' experience planning tours throughout Southern Africa. As such, our itineraries and routes have been perfected over many years ensuring that your tour will run smoothly. We visit the highlights of Southern Africa but ensure that you do not follow the well-trodden tourist track. All of us at Sunway Safaris have extensive travel experience in Africa, and throughout the world. Being adventure travellers ourselves, we know how to plan trips that give you a broad experience of the countries that you will visit.
- **Based in Africa** - probably the most important part of a Sunway safari is that we are an African company with offices in South Africa and Botswana. We live in Africa; we travel in Africa and it is our passion for this amazing continent that makes Sunway your best travel option.
- **Age Policy** - On all scheduled tours, we accept children 12-17 with accompanying adult. We have no upper age limit. Clients older than 65 years of age at the time of travel require a medical certificate stating the client is fit and healthy to join an adventure travel group tour. We have many clients over 65 years of age, who are perfectly capable of enjoying every aspect of a Sunway tour, both accommodated and camping. For more details contact marketing@sunway-safaris.com

SOS trees project – Okavango Botswana

- For hundreds of years, the local communities in and around Botswana's Okavango Delta have used the wood of the sausage tree to craft their traditional mokoro (dugout canoes). The knowledge and skill have been passed down from generation to generation and, up until recently, has been a sustainable practice. With increasing numbers of people visiting the Delta each year, more mokoro are needed and as a direct result, more and more sausage trees are being felled and the sausage tree is sadly disappearing from the region. A traditional wooden mokoro will have to be replaced every five years, thereby placing increased pressure on the dwindling sausage tree supply.
- Sunway Safaris has established a project to encourage polers in the local communities to buy replica fibreglass mokoro's, which have a lifespan of approximately ten years, are more stable and are produced without any negative affect to the environment. As such, sponsorship for each fibreglass mokoro is needed, and a portion of the tour cost will be donated to the project, but we also will offer our clients the opportunity to contribute to this worthwhile cause. Please feel free to contact the Sunway Safaris office for more information on the SOS Trees project or if you would like to make any contributions towards this project. It is something that is close to all of our hearts and we hope that it will be successful.

Local Payment

- A local payment is required on this safari and this will be collected by your tour leader on departure. The local payment forms part of your overall tour cost and must be taken into consideration when booking your safari. It will be used by your tour leaders to pay for some of the operational costs incurred on safari.

Sunway prepays by bank transfer, as many of the tour costs as possible. However, in many cases, a cash payment is the only option: certain of the destinations that we visit, only accept cash. For example entry fees to most national parks, some of the campsites and also local food markets (and even some shops) are only payable in cash. In addition, each Sunway vehicle has a garage card but these are only accepted in South Africa and parts of Namibia, therefore in all other countries, fuel must be paid for in cash. Due to the remoteness of some departure points, having a local payment system enables us to manage tour funds effectively. The efficiency of this system helps keep the overall tour prices down.

For these reasons, it is necessary for Sunway to charge a local payment. It also ensures that a portion of the tour costs goes directly into the country you are visiting, thereby benefiting local communities and contributing to the conservation of the areas we visit. This is all part of Sunway Safaris' ongoing effort to operate sustainable safaris that make a real difference.

It is important that you ensure that your USD notes are clean and undamaged, as many banks and exchange bureaus will not accept dirty, damaged or torn notes. Pre-2013 issue US\$ notes are not accepted in some places, so Sunway will not accept these notes as local payment.

Participation

- An essential part of your Sunway Safari is participation – from putting up your tent or packing away in the morning to helping with meal preparation and cleaning up – it's all part of your adventure and when everyone puts in a little effort the trip will run smoothly. Your tour leaders will do all the meal preparation, but we do ask the clients to help with the washing up. Team spirit is part of the fun!

Recommended reading

Before you travel you might want to read any of the following books. While not specific to the Sunway tour you will join, they do provide some background understanding of the countries you will be visiting.

- A Falcon Flies by Wilbur Smith (Fictional story of life in pre-colonial Rhodesia / Zimbabwe)
- Wankie by Davidson Ted (a story about Hwange National Park)
- Selous Scouts Top Secret War by Ron Reid-Daly (an account of the Zimbabwe War of Independence)
- How I Found Livingstone by Henry M. Stanley (a factual account of Stanley's travels in Africa)
- #1 Ladies Detective Agency by Alexander McCall Smith (Fictional story of life in Botswana)
- Trees of the Okavango by Veronica Roodt (A reference book with traditional uses and myths)
- Okavango: Jewel of the Kalahari by Karen Ross (A comprehensive description of the Delta ecology)
- Don't run whatever You Do by Peter Allison (A guide's perspective of Botswana lodge life)
- Okavango: Africa's Last Eden by Frans Lanting (A coffee table book of photography)
- Newman's Birds of Southern Africa by Kenneth Newman
- Sasol Birds of Southern Africa by Ian Sinclair, Phil Hockey, and W.R. Tarboton
- The Safari Companion: A Guide to Watching African Mammals Including Hoofed Mammals, Carnivores, and Primates by Richard D. Estes and Daniel Otte
- Field Guide to Trees of Southern Africa (Field Guides) by Braam Van Wyk, Keith Coates Palgrav, and Piet Van Wyk

Shopping

- Craft shopping for carvings, batiks, paintings and clothing is best in Victoria Falls which has a wide variety of curios. Botswana has beautiful grass weavings, but these are available mostly at curio shops as there are hardly any craft markets in Botswana.

Food

- We pride ourselves on offering delicious healthy meals to our clients and will provide three meals per day, except 5 dinners and 2 lunches in Maun, Kasane & Victoria Falls where we try out local restaurants.
- The tour leaders do the shopping and meal planning for each group. He/she will always try to obtain fresh produce wherever possible. A rough idea of what these will consist of is: Breakfast - cereals or coffee and toast or the occasional fried breakfast, Lunch - cheese, cold meats, salads on bread or rolls, Dinner - braais (local barbecue), potjies (stews), stir-fries etc. We use regular plates, cups and cutlery. All cooking and eating utensils will also be provided.
- Please be aware that, due to the diverse tastes of our clients, we are unable to accommodate individual food preferences on our group tours. The group shared meals we provide are subject to available produce, and in our sometimes-remote destinations, the variety of ingredients is sometimes limited. However, we do take allergies, vegetarian and vegan dietary requirements into consideration to ensure everyone has suitable meal options.
- We will supply fruit squash served with breakfast and tea or coffee served with breakfast and dinner. All other beverages will be for your own expense. We will not supply bottled drinking water although it is available at many shops on tour.

Difficulty

- Anyone who is generally active and in good health should enjoy this trip. Simple campsites and basic wild camps are enjoyed by the outdoor enthusiast, you will get dusty on occasion; but this is Africa!
- Full itinerary with a couple of long driving days. The road conditions through the wilderness areas are very poor and our progress can at times be slow and dusty. Remember to hold on at all times and enjoy the ride!
- Everyone is asked to help with the running of camp on tour. In other words, if everyone spends a little time setting up camp, preparing meals and cleaning up then the tour will run smoothly and everyone will have a good time. Participation is the name of the game.

Things you should know

- Includes park entrances, game drives and the Okavango Delta excursion.
- As this tour spends most a large amount of time in wildlife areas it is essential that clients adhere to the tour leaders (and local guides) instructions regarding interaction with wildlife, camp safety and game walk/drive rules.
- Your client will need a valid passport and visas for entry into Zimbabwe, and Botswana and re-entering South Africa.
- Luggage, please pack to a limit of 12kgs in a soft sports bag. Also bring a daypack for walks and keeping in the vehicle. On the Accommodated Adventures & Classic Journeys, all bedding is provided, and you will not be required to bring a sleeping bag or pillow. At most accommodation establishments towels will be provided, but it is always a good idea to bring a small travel towel for the beach or swimming pool.
- For the Okavango Delta wilderness camp, you need to re-pack clothes and personal items for the two nights into your daypack, as space on the mokoros is limited. Your main bag will remain in Maun. Please make sure to bring a small towel with you as there are no towels supplied for these two nights.
- We recommend that you bring a small amount of Euro, US\$ or South African Rand for personal expenses on this trip. In Botswana please note that foreign currency will need to be changed into Botswana Pula as shops, restaurants and market vendors only accept BWP. In Zimbabwe you will need USD cash (or EUR or ZAR

although they are less readily accepted). Mastercard and Visa credit cards can also be used for restaurants, shops and optional activities throughout the tour. See the Sunway tour dossier for approximate costs of drinks and meals etc.

Common questions about this trip

1. **Is it safe?** Zimbabwe has been involved in a political power struggle over the past few years, and this has deterred tourists from travelling to the country. Having said this, the Zimbabwe people are always friendly and helpful to visitors to their country and tourists are welcomed with open arms. Botswana is safe and your guide knows both countries intimately and will endeavour to show you the best parts while looking after you. In the wild areas, your guide will brief you on the necessary precautions, follow this advice and you will be fine. Be aware of your personal belongings and you will have a great trip!
2. **Do I need malaria tablets?** Yes, the trip passes through malaria areas and prophylactics are recommended.
3. **What do I need to bring?** All details are covered in our general tour briefing (available from www.sunway-safaris.com on the home page) but the basics are: - comfortable clothes for warm days and cool evenings, walking shoes, flashlight, a raincoat, hat and sunglasses, swimsuit, a small pair of binoculars also comes in very handy and most importantly - a sense of adventure!

