

Tour code:

**NB21**

**2024**

Guaranteed departures

Small group safari maximum: **12 travellers**

Travel through: **Namibia, Botswana & Zambia**

Safari length: **21 days**

Date of issue: 15Aug23



## NAMIBIA & BOTSWANA "DESERT & DELTA"

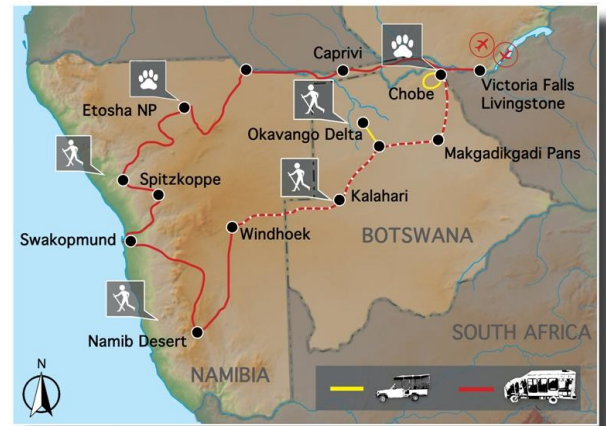
A journey through the lush green Okavango Delta and the beautiful desolation of the Namib Desert is an exploration of a lifetime across Southern Africa. Exciting wildlife in Etosha NP, walking the red sand dunes of Sossusvlei and adventure through the Okavango Delta by mokoro.

**DEPARTS:** LIVINGSTONE - ZAMBIA on Sunday at 14:00pm

**ENDS:** LIVINGSTONE - ZAMBIA on Saturday at ±12:00noon

### Highlights

- \* Victoria Falls – A natural wonder of the world
- \* Caprivi – game drives & boat cruise
- \* Etosha NP – game viewing from camp & on drives
- \* Brandberg – rock paintings
- \* Swakopmund – dune boarding & sea kayaking
- \* Namib Desert – walk Sossusvlei dunes
- \* Kalahari – walk with San Bushman
- \* Okavango Delta – mokoro excursion and bush walks
- \* Chobe NP – sunset boat cruise on Chobe River



## SAFARI GRADE: CAMPING

**NB21 Namibia & Botswana** Desert & Delta is the full tour. Also offered as an accommodated safari.

**NB15 Namibia & Caprivi**, covers the Zambezi Region and Namibia, ending in Windhoek with access to international flights.

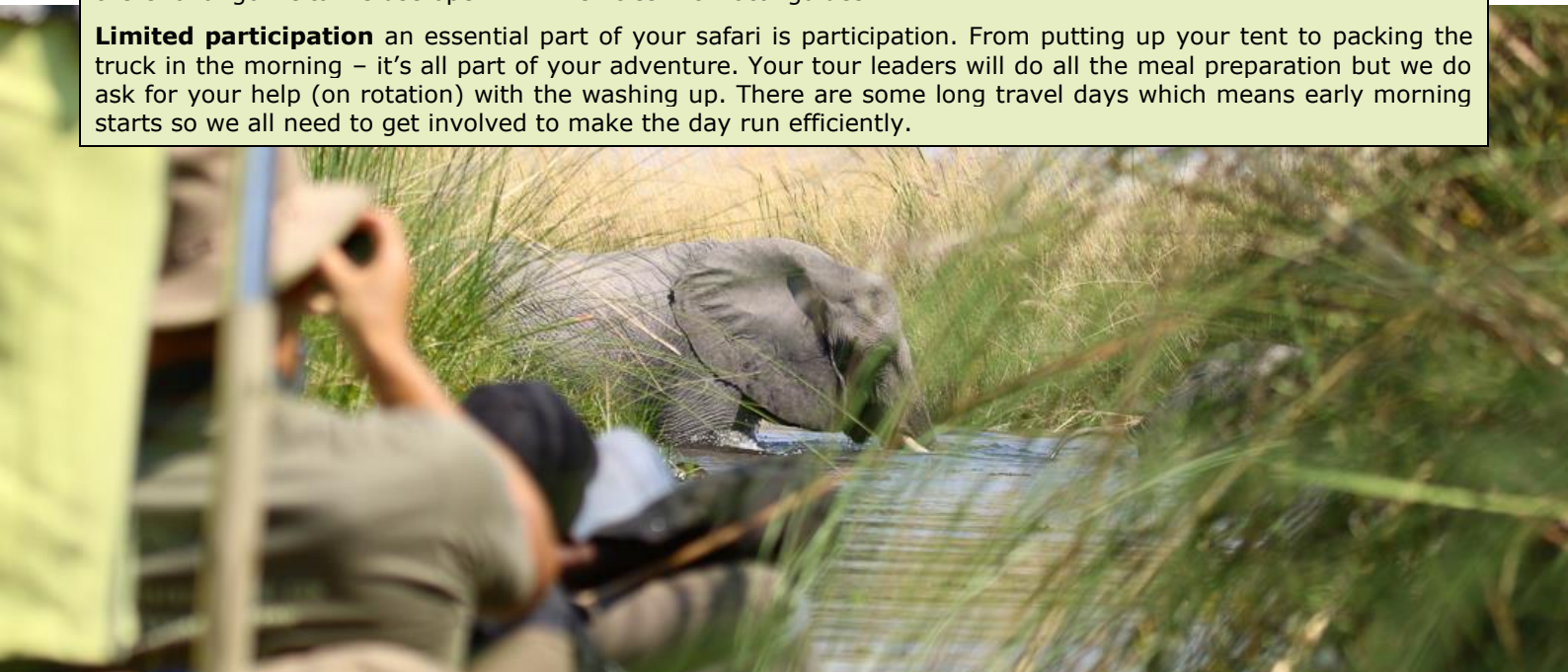
**Overnight** 14 nights on safari we stay at designated campsites, in or bordering national parks and towns. Formal campsites have hot and cold showers, laundry facilities & shops.

2 nights "camping wild" without fences in the Okavango. On these nights the crew will erect a bucket shower (with hot water off the fire) and a pit latrine (with seat!). 4 nights in Swakopmund, Windhoek Kasane in guest houses and lodges with en suite twin bedrooms.

**Meals** 20 breakfasts, 17 lunches & 12 dinners will be provided by the Sunway crew, prepared at the vehicle & eaten around the campfire or in a boma. For certain meals the group will sample local fare at restaurants (own expense).

**Transport** we use safari trucks with 12 seats for this tour. Potholes, corrugated gravel roads and livestock on the roads can make travel slow. There are some long drives, so sit back and enjoy the scenery! For the transfers into the Okavango Delta we use open 4WD vehicles with local guides.

**Limited participation** an essential part of your safari is participation. From putting up your tent to packing the truck in the morning – it's all part of your adventure. Your tour leaders will do all the meal preparation but we do ask for your help (on rotation) with the washing up. There are some long travel days which means early morning starts so we all need to get involved to make the day run efficiently.



## CAMPING ITINERARY

### Day 1 - 2 **LIVINGSTONE** [camping Bx1--] (B=breakfast, L=lunch, D=dinner)

The group will meet in Livingstone, in Zambia, at 14:00. We have 2 days to explore Victoria Falls, a natural wonder of the world, plunging into the Zambezi Gorge. Adventure activities abound, white water rafting on the mighty Zambezi, or a 111m bungee jump (own expense).

*Day 1: Breakfast is not included*

*Day 1: Lunch is an own expense meal*

*Day 1: Dinner will be an own expense meal at a local restaurant*

*Day 2: Breakfast provided by the tour leaders with the help of the group*

*Day 2: Lunch is an own expense meal*

*Day 2: Dinner will be an own expense meal at a local restaurant*

**Includes:** Entrance to see the Victoria Falls.

**Distance/time:** N/A

**Optional Activities:** White water rafting, sunset cruises, scenic flights & many more.

**Overnight:** Campsite – good ablution facilities, hot showers, swimming pool, restaurant & bar.



Victoria Falls Waterfront is 100% Zimbabwean owned. To conserve water in the area, 99% of the water from the Zambezi River is filtered. They support Kamwe School a poorly funded government school as well as providing six-month training programs and practical experience for students who are studying tourism and hospitality related subjects in college.



### Day 3 – 4 **CAPRIVI** [camping BLD]

Heading out of Livingstone we cross at Sesheke into the Caprivi, a narrow strip of Namibian land that extends between Angola, Zambia and Botswana. An abundance of large rivers attracts a variety of animals and birds and we have 2 days to explore this remote and beautiful region, including a boat cruise on the Kwando River.

*Day 3, 4: Breakfast provided by the tour leaders with the help of the group*

*Day 3, 4: Lunch provided by the tour leaders with the help of the group*

*Day 3, 4: Dinner provided by the tour leaders with the help of the group*

**Includes:** Entrance fees & game drives, boat cruise on Kwando River.

**Distance/time:** **Day 3:** ±350km, 5h00 actual driving time, but with a seasonally potholed road, a slow border crossing and lunch stop we expect a total travel day of ±7h30. This long travel day takes us to a special overnight stop.

**Day 4:** ±200km, 3h00 actual driving time, en-route we stop for village walk and expect a travel day of ±4h00.

**Overnight:** Campsite - good ablution facilities with hot showers, restaurant, bar & swimming pool.



### Day 5 **RUNDU** [camping BLD]

After a morning enjoying the abundant birdlife that surrounds the camp, the road takes us directly west along the Kavango River. Villages of grass huts and local wooden crafts and carvings are a common sight. We stop for the night at our riverside camp in Rundu and enjoy a spectacular sunset.



*Day 5: Breakfast provided by the tour leaders with the help of the group*

*Day 5: Lunch provided by the tour leaders with the help of the group*

*Day 5: Dinner provided by the tour leaders with the help of the group*

**Includes:** N/A  
**Distance/time:** ±250km, 3h30 actual driving time, with a couple of stops it's a travel day of less than ±04h30.  
**Overnight:** Campsite - good ablution facilities with hot showers, restaurant, bar & swimming pool.



Nkwazi Lodge is Namibian owned and operated, with all 15 staff employed from the local community. The owners started a pre-school 12 years ago, providing 40-50 children with 3 meals a day and an education in preparation for Grade 1. They also support 40 - 55 scholars from grade 1 to 12, and currently supporting 5 university students. Guided village visits have a financial benefit for the local community. In addition, the lodge has 25% solar power, grow 50% of the vegetables needed and have a small indigenous nursery on site.



## **Day 6 – 7 ETOSHA NATIONAL PARK** [camping BLD]

Etosha National Park, “the great white place of dry water”, in the game rich north west corner of Namibia offers a variety of wildlife. We take game drives around the huge dry pan to find the elephants, herds of antelope and lions around the waterholes before we camp at Namutoni, Halali or Okaukuejo with their flood-lit waterholes.

*Day 6, 7: Breakfast provided by the tour leaders with the help of the group*

*Day 6, 7: Lunch provided by the tour leaders with the help of the group*

*Day 6, 7: Dinner provided by the tour leaders with the help of the group*

**Includes:** Entrance fees to Etosha National Park, morning & afternoon game drives.  
**Distance/time:** ±590km, 07h30 actual driving time, day 6 is a long transit travel day of ±09h00. The following full day is set aside for game drives in Etosha NP.  
**Optional Activities:** Night game drive in National Park game viewing vehicle.  
**Overnight:** Campsite - good ablution facilities with hot showers, restaurant, bar, swimming pool & shop.



## **Day 8 UGAB WILDERNESS** [camping BLD]

Our next stop is the Brandberg where we camp next to the dry Ugab River bed, home to the rare desert elephants. We explore the mountains on foot with our local guides, who lead us through this region adorned with rock art including the “White Lady”.

*Day 8: Breakfast provided by the tour leaders with the help of the group*

*Day 8: Lunch provided by the tour leaders with the help of the group*

*Day 8: Dinner provided by the tour leaders with the help of the group*

**Includes:** Guided walk to view San rock art.  
**Distance/time:** 600kms, ± 7½ hours excluding stops for sightseeing & lunch.  
**Overnight:** Campsite - good ablution facilities with hot showers, bar, swimming pool & telephone.



## Day 9 **SPITZKOP** [camping BLD]

Our journey covers some beautiful desert landscapes as we move south towards the huge granite domes that rise out of the desert at Spitzkoppe. We set up camp at the foot of these massive domes, and take a walk to explore the area. The silence and wide open spaces add to the mystery and we enjoy a magnificent sunset.

*Day 9: Breakfast provided by the tour leaders with the help of the group*

*Day 9: Lunch provided by the tour leaders with the help of the group*

*Day 9: Dinner provided by the tour leaders with the help of the group*

**Includes:** Entrance to Spitzkoppe.

**Distance/time:** ±430km, 6h00 actual driving time, and with a couple of stops on the way it's a long and varied travel day of ±9h00.

**Overnight:** Campsite – basic ablution facilities.



## Day 10 – 11 **SWAKOPMUND** [guest house Bx2 Lx1 -]

We cross flat open plains to the coast where we visit the Cape Cross seal colony. Further south is the coastal town of Swakopmund. Day 11 is free to explore the town or try dune boarding or sea kayaking (own expense). We enjoy evening restaurant meals (own expense).

*Day 10: Breakfast provided by the tour leaders with the help of the group*

*Day 10: Lunch provided by the tour leaders with the help of the group*

*Day 10: Dinner will be an own expense meal at a local restaurant*

*Day 11: Breakfast provided by the guest house*

*Day 11: Lunch is an own expense meal*

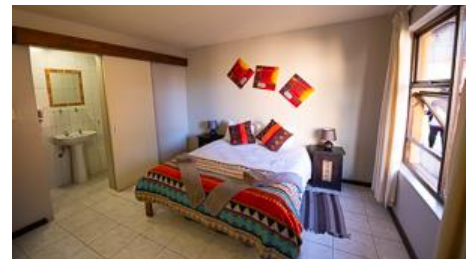
*Day 11: Dinner will be an own expense meal at a local restaurant*

**Includes:** Entrance to Cape Cross seal colony.

**Distance/time:** ±350km, 5h00 actual driving time, after a morning walk we have travel day of 8h00 including a visit to Cape Cross.

**Optional Activities:** Sand boarding, Skydiving, Ocean canoe safari, Scenic flights & many more.

**Overnight:** [Dunedin Star guest house](#) - twin share rooms with en suite facilities. Telephone & restaurant. Wifi available.





## Day 12 – 13 NAMIB DESERT [camping BLD]

The Lunar landscapes surround the town of Swakopmund and we visit these as we leave and head into the Namib Desert with its towering red sand dunes. We will walk to Sossusvlei, explore Sesriem Canyon and watch dramatic sunsets over the world's highest sand dunes.

*Day 12: Breakfast provided by the guest house*

*Day 12: Lunch provided by the tour leaders with the help of the group*

*Day 12: Dinner provided by the tour leaders with the help of the group*

*Day 13: Breakfast provided by the tour leaders with the help of the group*

*Day 13: Lunch provided by the tour leaders with the help of the group*

*Day 13: Dinner provided by the tour leaders with the help of the group*

**Includes:** Entrance fees to Sesriem Canyon and Naukluft National Park.

**Distance/time:** ±370km, 5h00 actual driving time, the desert scenery is varied but the road is rough gravel, so with a few stops its a long travel day of ±7h30.

**Optional Activities:** On arrival at Sossusvlei the guide will walk with the group into Sossusvlei (+/- 3.5km). For those clients who do not want to walk, there are 4WD vehicles that can drive you in. The 4WD, is an own expense (+/- N\$85 each way) and is optional.

**Overnight:** Campsite - good ablution facilities with hot showers, shop.



## Day 14 WINDHOEK [guest house BL-]

The charm of the city of Windhoek lies in its harmonious blend of African and European cultures and the friendliness of its people. We arrive late in the day and enjoy a restaurant meal (own expense).


*Day 14: Breakfast provided by the tour leaders with the help of the group*

*Day 14: Lunch provided by the tour leaders with the help of the group*

*Day 14: Dinner will be an own expense meal at a local restaurant*

**Includes:** N/A

**Distance/time:** ±350km, 5h00 actual driving time, starting the day on rough gravel roads we climb the escarpment for a travel day of ±6h00.

**Overnight:** [Terra Africa Guesthouse](#) – twin rooms with en-suite facilities, swimming pool, restaurant & bar. Wifi available. 



Terra Africa Guesthouse is a Namibian family-owned and managed establishment that has been in operation for over two decades. Its employees are all local Namibians recruited from the surrounding communities. Terra Africa is dedicated to environmentally friendly practices. For instance, glass and plastic are separated on-site for recycling, exclusively biodegradable cleaning products are utilized, energy-efficient appliances have been installed, and refillable bottles are employed in bathrooms to minimize plastic waste.



**Victoria Falls to Windhoek tour ends at +/-08:00am on the morning of day 15, see [www.sunway-safaris.com](http://www.sunway-safaris.com) for itinerary & price (NB15).**

## Day 15 KALAHARI [camping BLD]

Crossing into Botswana we overnight in the heart of the Kalahari. We take a walk with the local San Bushmen to learn fascinating bush skills.

*Day 15: Breakfast provided by the guest house*

*Day 15: Lunch provided by the tour leaders with the help of the group*

*Day 15: Dinner provided by the tour leaders with the help of the group*

**Includes:** Nature walk with local San bushman and translator.

**Distance/time:** ±520km, 6h00 actual driving time. An early start on all tarmac roads, but with a border crossing and lunch stop we expect a total transit day of ±8h00 into the Kalahari.

**Overnight:** Campsite - good ablution facilities with hot showers, swimming in old quarry.



Dqae Qare San Lodge is owned and operated by the D'Kar San community and employs 62 staff. Dqae Qare is situated on a game farm which provides most of the meat for the lodge. The community also use the game farm for conservation in partnership with Cheetah Conservation Botswana. Power is 100% solar-generated. Dqae Qare empowers the San community by providing income and a platform to preserve their culture.



### **Day 16, 17, 18 OKAVANGO DELTA** [camping Bx3 Lx3 Dx2]

We camp in Maun for a night in preparation before journeying deep into the Okavango Delta on mekoro (dugouts) - an experience not to be missed. We camp wild on remote islands for 2 nights and enjoy bush walks, swimming and the birdlife in this pristine wilderness area.

*Day 16: Breakfast provided by the tour leaders with the help of the group*

*Day 16: Lunch provided by the tour leaders with the help of the group*

*Day 16: Dinner will be an own expense meal at a local restaurant*

*Day 17: Breakfast provided by the tour leaders with the help of the group*

*Day 17: Lunch provided by the tour leaders with the help of the group*

*Day 17: Dinner provided by the tour leaders with the help of the group*

*Day 18: Breakfast provided by the tour leaders with the help of the group*

*Day 18: Lunch provided by the tour leaders with the help of the group*

*Day 18: Dinner provided by the tour leaders with the help of the group*

**Includes:** Entrance to Okavango Delta, morning and afternoon game walks with local guides.

**Distance/time:** **Day 16:** ±340km, 04h30 actual driving time. After a morning walk, the good tarmac road to Maun, and supply shopping, it's a travel day of ±5h30.

**Day 17:** ±50km, 2h00 actual driving time to mekoro station. Mokoro ride to camp is dependent on campsite location so overall travel time for the day ±6h30.

**Optional Activities:** Scenic flight over the Okavango Delta (+/-USD95-120) pp depending on number of people in each aircraft).

**Overnight:** **Maun:** Campsite - good ablution facilities with hot showers, swimming pool, restaurant & bar.

**2 nights Okavango Delta:** Wild camping – basic camping facilities, with bucket showers. You will need to bring your own towel.



The Okavango Kopano Mokoro Community Trust is run by the communities on the south eastern sector of the Okavango Delta with entrance and camping fees paid to the trust, and wages paid directly to the individual guides / polers. Work is split between community members on a rotation basis administered by each village. By working with these communities we help provide sustainable economic benefit for the conservation of the area. Please also see the Sunway SOS Save Our Sausage Trees project.





## Day 19 **MAKGADIKGADI PANS** [camping BL-]

Feel the vastness of Africa under a big sky sunset. Depending on the season, the pans can either be a shimmering haze of dust or a vast shallow lake.

*Day 19: Breakfast provided by the tour leaders with the help of the group*

*Day 19: Lunch provided by the tour leaders with the help of the group*

*Day 19: Dinner will be an own expense meal at a local restaurant*

**Includes:** Entrance fees to Makgadikgadi Pans.

**Distance/time:** ±350km, 5h00 actual driving time. Starting with a mekoro ride, a 4x4 transfer and then repacking into the safari vehicle it's a big travel day of ±8h00.

**Overnight:** Campsite - good ablution facilities with hot showers, swimming pool, restaurant & bar.



## Day 20: **CHOBE NATIONAL PARK** [chalet BL-]

We turn north through the Chobe Forest Reserve to Kasane and our lodge. Chobe NP is famous for large herds of elephant and buffalo. Our afternoon is spent on an exciting wildlife boat cruise in the Chobe NP.

*Day 20: Breakfast provided by the tour leaders with the help of the group*

*Day 20: Lunch provided by the tour leaders with the help of the group*

*Day 20: Dinner will be an own expense meal at a local restaurant*

**Includes:** Sunset game viewing boat cruise on the Chobe River.

**Distance/time:** ±350km, 5h00 actual driving time. We leave early and aim for a midday arrival after total travel for the day of ±6h00.

**Overnight:** [Thebe River Safaris](#) – twin chalets with en suite facilities. Swimming pool, bar, restaurant, telephone. Wifi available in main area only.



Thebe River Safaris employs 89 Motswana staff and is Motswana owned and operated. The lodge grows their own vegetables and sources other products locally, all waste is recycled. Although the lodge is situated along a river visitors are asked to conserve water where possible and LED lights are used throughout the property to conserve energy.



## Day 21 **ZAMBIA - VICTORIA FALLS - TOUR ENDS** [- B--]

This morning we transfer to Livingstone where tour ends at +/- 12:00 noon at Livingstone Airport (LVI).

**For bookings contact:** [info@africantravels.com](mailto:info@africantravels.com) | [www.africantravels.com](http://www.africantravels.com) and receive a free WakaWaka Power+ solar charger

Day 21: Breakfast provided by the lodge

Day 21: Lunch is not included

Day 21: Dinner is not included

**Includes:** N/A

**Distance/time:** ±70km, 1h00 actual driving time. It's not a long way, but the border can be busy and slow so we anticipate a total travel day of ±3h00.

**Overnight:** N/A

**Please note: we do a free drop off at Livingstone airport on day 21 at 12:00noon so you can book your flight out for the last day of the tour.**

**Please note:** The distance and travel times quoted above are an estimate only, and subject to local road conditions and photo stops!

**Special Interest:** Namibia has a rich ancient rock art heritage. Our local guide in the Brandberg Tsiseb conservancy lands, will lead us on a walk to view the White Lady rock painting. It is usually assumed that the painting shows a ritual dance, and that the "White Lady" is actually a medicine man.

**Sustainable Tourism:** In the Ugab wilderness region we camp at the White Lady Lodge campsite. A partnership was Signed in 2003 and the community benefit through employment and a percentage of the income of the lodge. There are also other spin-offs such as the sale of fire wood to the lodge.

## 2024 PRICES AND DEPARTURE DATES:

**RACK Price:** (valid Jan 2024 – Dec 2024)

**NB21 € 2 640 pps**

**Single supplement: € 290 pp** (If you are traveling on your own, Sunway will "room" you with another same gender client. You do not pay extra when booking as a single person. If however you request a single tent, then you'll pay the single supplement.)

### 2024 DEPARTURE DATES



<b>NB21</b>			<b>NB15</b>		
	Departs	Ends		Departs	Ends
	LIVINGSTONE	LIVINGSTONE		LIVINGSTONE	WINDHOEK
	Sunday at	Saturday at		Sunday at	Sunday at
	14:00 pm	12:00 noon		14:00 pm	08:00 am
BT	21-Jan-24	10-Feb-24	BT	21-Jan-24	04-Feb-24
BTg	18-Feb-24	09-Mar-24	BTg	18-Feb-24	03-Mar-24
BT	17-Mar-24	06-Apr-24	BT	17-Mar-24	31-Mar-24
BT	24-Mar-24	13-Apr-24	BT	24-Mar-24	07-Apr-24
BTg	<b>14-Apr-24</b>	<b>04-May-24</b>	BTg	<b>14-Apr-24</b>	<b>28-Apr-24</b>
BT	12-May-24	01-Jun-24	BT	12-May-24	26-May-24
BT	<b>09-Jun-24</b>	<b>29-Jun-24</b>	BT	<b>09-Jun-24</b>	<b>23-Jun-24</b>
BT	<b>30-Jun-24</b>	<b>20-Jul-24</b>	BT	<b>30-Jun-24</b>	<b>14-Jul-24</b>
BTg	<b>14-Jul-24</b>	<b>03-Aug-24</b>	BTg	<b>14-Jul-24</b>	<b>28-Jul-24</b>
BT	<b>28-Jul-24</b>	<b>17-Aug-24</b>	BT	<b>28-Jul-24</b>	<b>11-Aug-24</b>
BT	<b>11-Aug-24</b>	<b>31-Aug-24</b>	BT	<b>11-Aug-24</b>	<b>25-Aug-24</b>
BTg	<b>18-Aug-24</b>	<b>07-Sep-24</b>	BTg	<b>18-Aug-24</b>	<b>01-Sep-24</b>
BT	<b>25-Aug-24</b>	<b>14-Sep-24</b>	BT	<b>25-Aug-24</b>	<b>08-Sep-24</b>
BT	<b>08-Sep-24</b>	<b>28-Sep-24</b>	BT	<b>08-Sep-24</b>	<b>22-Sep-24</b>
BTg	<b>22-Sep-24</b>	<b>12-Oct-24</b>	BTg	<b>22-Sep-24</b>	<b>06-Oct-24</b>
BT	<b>06-Oct-24</b>	<b>26-Oct-24</b>	BT	<b>06-Oct-24</b>	<b>20-Oct-24</b>
BTg	<b>20-Oct-24</b>	<b>09-Nov-24</b>	BTg	<b>20-Oct-24</b>	<b>03-Nov-24</b>
BTg	<b>03-Nov-24</b>	<b>23-Nov-24</b>	BTg	<b>03-Nov-24</b>	<b>17-Nov-24</b>
BT	17-Nov-24	07-Dec-24	BT	17-Nov-24	01-Dec-24
BTg	01-Dec-24	21-Dec-24	BTg	01-Dec-24	15-Dec-24
BT	15-Dec-24	04-Jan-25	BT	15-Dec-24	29-Dec-24

\* **Bold dates** are guaranteed departures, all other dates guaranteed from 4 clients.

\* **German:** These tours are lead by a German speaking translator / tour leader.

\* **BT/BTg:** Tour can be linked after either the BT14 departures



**NB21** Livingstone to Livingstone

**€ 2 640 pps**

Single supplement: € 290 pp

**NB15** Livingstone to Windhoek

**€ 2 120 pps**

Single supplement: € 165 pp

## DETAILED TOUR INFORMATION:

### *In a nutshell*

- A true exploration of Namibia, Botswana - see it all!
- All inclusive trip with cultural experience, adventure and wildlife.
- Victoria Falls, Caprivi, Etosha, Damaraland, Namib Desert, Kalahari, Okavango Delta & Chobe.

### *Why travel with Sunway Safaris*

We understand that there are several options available to you when choosing your African safari. We also know that you want to make the most informed decision about your safari, what you get, what's included and what you see and experience. So these are just a few of the Sunway qualities and facts:

- **Small groups** – by travelling with a maximum of 12 people, you can witness Africa and have first-hand contact with this amazing continent and its people without being a negative influence. This has been a key factor in our continued success. Our trips appeal to a wide demographic of traveller. Our clients range in age from 25 to 65+ with the average being 45. The range of travellers gives a variety of perspectives which adds to the experience of each safari.
- **2 Sunway tour guides** – group leaders are the key to any safari. On a Sunway safari you will travel with 2 qualified and registered field guides (Field Guides Association of SA). Two guides as crew, not a guide and a driver, means interesting trips with maximum knowledge and information. Our guides have a passion for Africa, her people and wildlife, and they love nothing more than sharing their knowledge with you.
- **Guaranteed departures** – departure dates on each itinerary shown as bold are guaranteed departure dates. All other departures operate with a minimum of 4 clients.
- **All-inclusive price** – when we travel ourselves, we always feel that if we're in a country we should find and see the best it has to offer. So when planning the Sunway routes, we ensure that each trip provides the best inclusions and experiences. For example, if you go to Botswana – you have to visit the national parks in an open 4WD – it is the essence of the Botswana wilderness. If you tour Zambia, then you must visit South Luangwa NP and do a game walk with a local scout. When booking on a Sunway Safari there are no hidden costs. All of the entrance fees are included, and a wide range of activities, and most meals. We have included many highlights in our tours, so that you will see and experience the highlights without having to pay extra when you get there. So when you decide on which safari company to book with, look carefully at what you're actually getting. You may only visit a place once, make sure you get the most out of it.
- **Safety** – our fleet of vehicles are custom built to ensure comfortable and safe touring. Each is constructed, by an authorised passenger vehicle builder, to the latest safety requirements, with a safety shell, and every seat has a lap belt. This gives you peace of mind when travelling with Sunway Safaris on the often demanding African roads.
- **Good2Go** - Our commitment to sustainable & responsible tourism is reflected in our low impact travel style where all we take is photographs and all we leave is our footprints. Being an African company, we have the grassroots contacts to make a real difference in the lives of the people whose lands we visit. On each itinerary in the brochure you'll find this symbol which highlights just one of the sustainable travel initiatives that we support.
- **Solo Travellers** – going it alone won't make your holiday more expensive; our reservations staff will match you up with another same-gender traveller to keep your holiday affordable. If however you request a single room or tent these are available, with a price supplement
- **Experience** - we have more than 28 years' experience planning tours throughout Southern Africa. As such, our itineraries and routes have been perfected over many years ensuring that your tour will run smoothly. We visit the highlights of Southern Africa but ensure that you do not follow the well-trodden tourist track. All of us at Sunway Safaris have extensive travel experience in Africa, and throughout the world. Being adventure travellers ourselves, we know how to plan trips that give you a broad experience of the countries that you will visit.



- **Based in Africa** - probably the most important part of a Sunway safari is that we are an African company with offices in South Africa and Botswana. We live in Africa, we travel in Africa and it is our passion for this amazing continent that makes Sunway your best travel option.
- **Age Policy** - On all scheduled tours, we accept children 12-17 with accompanying adult. We have no upper age limit. Clients older than 65 years of age at the time of travel require a medical certificate stating the client is fit and healthy to join an adventure travel group tour. We have many clients over 65 years of age, who are perfectly capable of enjoying every aspect of a Sunway tour, both accommodated and camping. For more details contact [marketing@sunway-safaris.com](mailto:marketing@sunway-safaris.com).

### **SOS trees project – Okavango Botswana**

- For hundreds of years, the local communities in and around Botswana's Okavango Delta have used the wood of the sausage tree to craft their traditional mokoro (dugout canoes). The knowledge and skill have been passed down from generation to generation and, up until recently, has been a sustainable practice. With increasing numbers of people visiting the Delta each year, more mokoro are needed and as a direct result, more and more sausage trees are being felled and the sausage tree is sadly disappearing from the region. A traditional wooden mokoro will have to be replaced every five years, thereby placing increased pressure on the dwindling sausage tree supply.

Sunway Safaris has established a project to encourage polers in the local communities to buy replica fibreglass mokoro's, which have a lifespan of approximately ten years, are more stable and are produced without any negative affect to the environment. As such, sponsorship for each fibreglass mokoro is needed, and a portion of the tour cost will be donated to the project, but we also will offer our clients the opportunity to contribute to this worthwhile cause. Please feel free to contact the Sunway Safaris office for more information on the SOS Trees project or if you would like to make any contributions towards this project. It is something that is close to all of our hearts and we hope that it will be successful.

### **Local Payment**

There is no local payment required for this tour.

### **Recommended reading**

Before you travel you might want to read any of the following books. While not specific to the Sunway tour you will join, they do provide some background understanding of the countries you will be visiting.

- Sands of Silence by Peter H Capstick
- Skeleton Coast by John H Marsh (Wreck of the Dunedin Star and its survivors)
- The Skeleton Coast by Benedict Allen (A journey through the Namib Desert)
- The Smell of Apples by Mark Behr (Story of a boy in Cape Town by then army on Caprivi)
- Etosha by Daryl and Sharna Balfour (A coffee table book of photography)
- Long Walk to Freedom by Nelson Mandela (Autobiography - Nelson Mandela is one of the great moral and political leaders of our time.)
- #1 Ladies Detective Agency by Alexander McCall Smith (Fictional story of life in Botswana)
- Trees of the Okavango by Veronica Roodt (A reference book with traditional uses and myths)
- Okavango: Jewel of the Kalahari by Karen Ross (A comprehensive description of the Delta ecology)
- Don't run whatever You Do by Peter Allison (A guide's perspective of Botswana lodge life)
- Okavango: Africa's Last Eden by Frans Lanting (A coffee table book of photography)
- Newman's Birds of Southern Africa by Kenneth Newman
- Sasol Birds of Southern Africa by Ian Sinclair, Phil Hockey, and W.R. Tarboton
- The Safari Companion: A Guide to Watching African Mammals Including Hoofed Mammals, Carnivores, and Primates by Richard D. Estes and Daniel Otte
- Field Guide to Trees of Southern Africa (Field Guides) by Braam Van Wyk, Keith Coates Palgrav, and Piet Van Wyk

### **Shopping**

- Craft shopping for carvings, batiks, paintings and clothing is best in Livingstone, Zambia which has a wide variety of curios. Botswana has beautiful grass weavings. Namibia also has unusual and interesting curios and crafts. If you see something you like, it is best to buy it because it is unlikely that you will see something similar further along. Crafts change from region to region.

### **Food**

- We pride ourselves on offering delicious healthy meals to our clients and will provide three meals per day, except where shown in the itinerary, when we try out local restaurants.
- The tour leaders do the shopping and meal planning for each group. He/she will always try to obtain fresh produce wherever possible. A rough idea of what these will consist of is: Breakfast - cereals or coffee and toast or the occasional fried breakfast, Lunch - cheese, cold meats, salads on bread or rolls, Dinner - braais (local barbecue), potjies (stews), stir-fries etc. We use regular plates, cups and cutlery. All cooking and eating utensils will also be provided.
- We do cater for special dietary requirements (e.g. vegetarian or allergies.)
- We will supply fruit squash served with breakfast and tea or coffee served with breakfast and dinner. All other beverages will be for your own expense. We will not supply bottled drinking water although it is available at many shops on tour.



### **Difficulty**

- Anyone who is generally active and in good health should enjoy this trip. The outdoor enthusiast enjoys simple campsites and basic wild camps, you will get dusty on occasion, but this is Africa!
- Full itinerary with a couple of long driving days, but also plenty of outdoor activity with some relaxing time. This is a long-distance trans Africa safari - there is a lot of distance to be covered and so there will be some long travelling days. Due to local conditions, border crossings, road detours and weather, the trip may alter route/schedule - please remember that this continent has its own time scale and things work differently here. Keep an open mind and a sense of humour - it's all part of the adventure!
- Everyone is asked to help out with the running of camp on tour. In other words, if everyone spends a little time setting up camp, preparing meals and cleaning up then the tour will run smoothly and everyone will have a good time. Participation is the name of the game.

### **Things you should know**

- Includes park entrances, game drives and the Okavango Delta excursion.
- Your client will need a valid passport and visas for entry into Namibia, Botswana and Zambia.
- If you are joining an Under Canvas camping trip, you will need to bring your own sleeping bag (and a small camp pillow) and a towel. Should you not have, or do not want to buy a sleeping bag, you can rent a sleeping bag and camp pillow from the Sunway office for Euro 1 per sleeping bag per day on tour. Please book this at the time of booking.
- We recommend that you bring Euro, US\$ or South African Rand for personal expenses on this trip but please note that in Namibia Euro and US\$ will need to be changed into Namibian \$ or South African Rand as shops, restaurants and market vendors only accept N\$ and ZAR. In Botswana please note that foreign currency will need to be changed into Botswana Pula as shops, restaurants and market vendors only accept BWP. Zambia requires that all services are paid in the local currency, however major credit cards (Mastercard / Visa) can also be used for optional activities in Livingstone and elsewhere on tour. See the Sunway tour dossier for approximate costs of drinks and meals etc.

### **Common questions about this trip**

1. **Can I buy camera memory cards?** Film, memory cards and other photographic accessories will be available several times on tour. A camera with a zoom lens from wide-angle to telephoto, 35-300mm, is advisable to capture both scenic and wildlife shots. Each vehicle is fitted with a 12/24V cigarette lighter – this should not be relied on for charging camera batteries and we recommend you bring a 2<sup>nd</sup> battery. Remember you can also charge your camera on those nights we use accommodation (SA 220V)
2. **Is it safe?** South Africa, Namibia, Botswana and Zambia are relatively safe and your guide knows the countries intimately and will endeavour to show you the best parts while looking after you. In the wild areas, your guide will brief you on the necessary precautions, follow this advice and you will be fine. Be aware of your personal belongings and you will have a great trip! Every precaution is taken to ensure a happy holiday.
3. **Do I need malaria tablets?** Yes, the trip passes through malaria areas and prophylactics are recommended.
4. **What do I need to bring?** All details are covered in our general tour briefing (available from [www.sunway-safaris.com](http://www.sunway-safaris.com) on the home page) but the basics are: - a warm sleeping bag, comfortable clothes for warm days and cool evenings, walking shoes, a raincoat, hat and sunglasses, swimsuit, a small pair of binoculars also comes in very handy and most importantly - a sense of adventure!

