

Tour code: **BZac15
2024**
 Guaranteed departures
 Small group safari maximum: **12 travellers**
 Travel through: **Botswana, Namibia & Zimbabwe**
 Safari length: **15 days**



BOTSWANA & ZIMBABWE "IVORY ROUTE"

This classic journey covers Botswana, Namibia & Zimbabwe & the core of the international Kavango Zambezi (KAZA) Transfrontier Conservation Area. This initiative is a multi-country effort to create a vast network of interlinking reserves and provide corridors for wildlife movement along natural migration routes, particularly for elephants. The lodges are beautiful, comfortable & make for a great adventure safari.

DEPARTS: VICTORIA FALLS on Sunday at 14:00pm
ENDS: VICTORIA FALLS on Sunday at +/-10:00am

Highlights

- * Victoria Falls – adventure activities
- * Hwange – game drives in an open vehicle
- * Matobos – game drive
- * Moremi game reserve – game drive
- * Okavango Delta – river cruise
- * Chobe National Park – sunset river cruise



SAFARI GRADE: CLASSIC

Overnight The accommodation throughout this classic journey is of 3+ star style and are chosen not only for their service and comfort level but also for their wonderful locations and local wildlife viewing opportunities. All rooms have private en suite facilities.

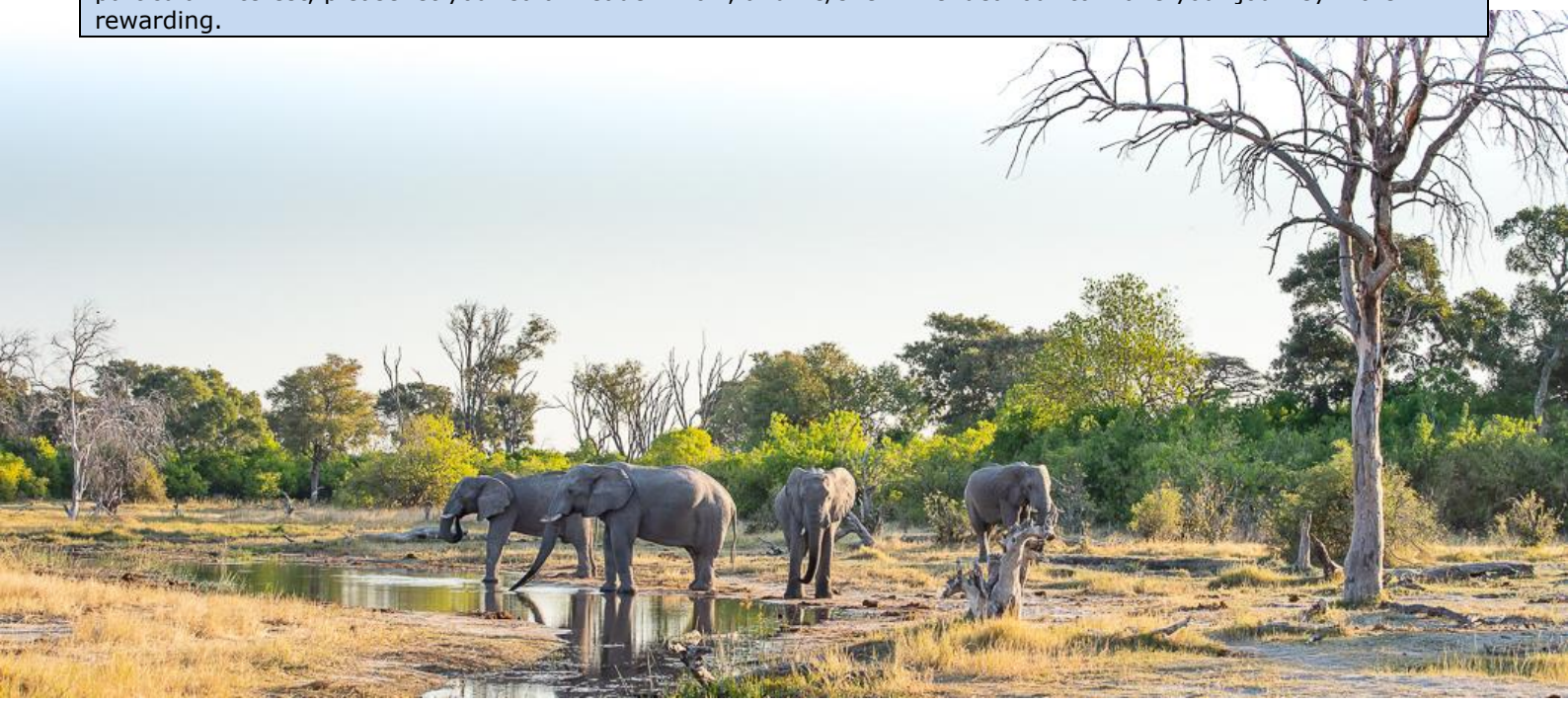
The Moremi tented bush camp on a private concession bordering Moremi GR is a particular highlight.

Meals 14 breakfasts, 5 lunches and 7 dinners are included. All of which are provided by the lodges at which we are staying. Due to travel arrangements or game viewing activities, 3 of the lunches will be packed picnic lunches. Where meals are not included there will be an opportunity to buy a meal en route, but these are mostly travel days so a quick stop is required.

Transport for the majority of this safari you travel in a Mercedes Sprinter bus with 12 forward facing seats and air conditioning; or (on 30% of tours) in a Sunway Safari truck with 12 seats.

For the game drives in Hwange, Matobos, Moremi and Chobe we use open sided 4WD vehicles with local guides.

Non participation This is an adventure tour, and as such please expect to get involved. Where there are porters, they'll help you, otherwise you'll need to carry your own bag. Included meals are all lodge provided. If you have a particular interest, please let your safari leader know, and he/she will endeavour to make your journey more rewarding.



CLASSIC JOURNEY ITINERARY

Day 1 VICTORIA FALLS [hotel - -]

The majestic sight of the mighty Zambezi River plunging over the Victoria Falls, welcomes you to your Zimbabwe and Botswana adventure. We check into our lodge before we explore the falls and tropical rain forest surrounds on foot in the afternoon before heading out to a local restaurant for dinner (own expense).

Day 1: Breakfast not included


Day 1: Lunch will be an own expense meal

Day 1: Dinner will be an own expense meal at a local restaurant

Includes: Entrance fees to see the Victoria Falls.

Distance/time: N/A

Optional Activities: Scenic flights & many more.

Overnight: [PheZulu Guest Lodge](#), twin rooms with en-suite facilities. Swimming pool, restaurant, bar and telephone. Wifi available. 



Bayete & Phezulu Guest Lodges are 100% Zimbabwean owned. The lodges catch rainwater in tanks for use and grey water is used in the gardens. Food is sourced locally as far possible & all waste is recycled. The lodges support Children in the Wilderness, Greenline Africa and are part of Green Tourism.



Day 2 - 3 HWANGE NATIONAL PARK [lodge Bx2 Lx1 Dx2]

Hwange National Park is a wildlife jewel, famous for its big game and large herds of elephant. Hwange is home to a wide variety of habitats, from its western regions on the edge of the Kalahari through large grass plains to the forested woodland in east Hwange. Our comfortable lodge for two nights is situated on the private concession on the eastern boundary of the park, our time is spent on a full day game drive, in open 4WD vehicles, in the park in search of big game.

Day 2: Breakfast provided by the hotel

Day 2: Lunch will be an own expense meal

Day 2: Dinner will be a set menu provided by the lodge


Day 3: Breakfast provided by the lodge

Day 3: Lunch will be a packed lunch provided by the lodge

Day 3: Dinner will be a set menu provided by the lodge

Includes: Entrance fees, full day game drive in open 4WD game viewing vehicle.

Distance/time: ±200km, 3h00 actual driving time, we leave Vic Falls mid-morning, ±2h00 for a visit to the Painted Dogs Conservation Centre and lunch stop en-route. So ±6h00 total travel time.

Overnight: [Hwange Safari Lodge](#) – for 2 nights at Hwange National Park, en-suite rooms, swimming pool, bar & restaurant. Wifi available at fee. 



Day 4 -5 MATOBOS NATIONAL PARK [chalet Bx2, Lx1, Dx2]

The rounded granite boulders and undulating valleys of the Matobos National Park are home to some of the last of the rhino in Zimbabwe. We spend our day on an excursion into the park that includes a game walk to see the rhino, discovering the ancient Bushmen paintings that adorn the rocks, and admiring the landscapes from Worlds View, the site of Cecil John Rhodes' grave.

Day 4: Breakfast provided by the lodge

Day 4: Lunch will be an own expense meal

Day 4: Dinner will be a set menu provided by the lodge


Day 5: Breakfast provided by the lodge

Day 5: Lunch provided by the lodge

Day 5: Dinner will be a set menu provided by the lodge

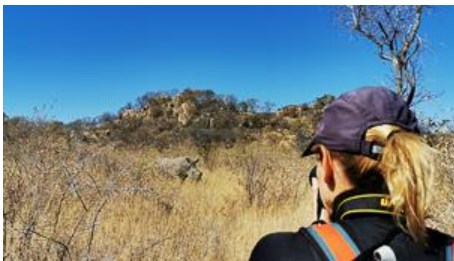
Includes: Entrance to Matobo National Park and game walk.

Distance/time: ±360km, 4h30 actual driving time, rolling tarmac road via Bulawayo should be ±6h00 travel time.

Overnight: [Big Cave Camp](#) - chalets - twin rooms with en-suite facilities (hot showers), swimming pool, restaurant, bar & telephone. Satellite Wifi available at a fee. 



Big Cave Camp is 100% Zimbabwean owned and has 18 staff from Matobo Hills area. Big Cave supports the Matobo Rhino Trust. The camp currently financially supports over 40 pupils at the local secondary school and are building a computer room for the school. The lodge also sponsors staff to train at the hotel and catering school in Bulawayo. 40% of power is from solar.



Day 6 NATA [chalet B - -]

This morning we leave Matobos and head west towards the Botswana border, we cross at Plumtree and we make our way to the Nata area for our overnight stop. In the late afternoon we will head out onto the Makgadikgadi Pans, vast salt pans that seem to stretch on to infinity. We will explore the area and have some fun taking photographs before the sunsets golden over the horizon.


Day 6: Breakfast provided by the lodge

Day 6: Lunch will be an own expense meal

Day 6: Dinner will be an own expense lodge meal

Includes: Entrance fees to Nata Bird Sanctuary.

Distance/time: ±325km, 4h30 actual driving time, + time at the border crossing and visit to Nata Sanctuary a full day of travel ±8h00 total.

Overnight: [Nata Lodge](#) - twin share chalet with en suite facilities. Swimming pool, bar, restaurant, telephone. Wifi available at restaurant. 



Day 7 MAUN [hotel B - -]

Maun's name is derived from a San word meaning "place of the short reeds" is nestled at the southern end of the Okavango Delta where our lodge overlooks the beautiful Thamalakane River. Here we

For bookings contact: info@africantravels.com | www.africantravels.com and receive a free WakaWaka Power+ solar charger

prepare for our trip into Moremi Game Reserve and our afternoon is free to bird watch along the river, relax around the pool or take an optional scenic flight over the Okavango Delta (own expense).


Day 7: Breakfast provided the lodge

Day 7: Lunch will be an own expense meal

Day 7: Dinner will be an own expense meal at a local restaurant

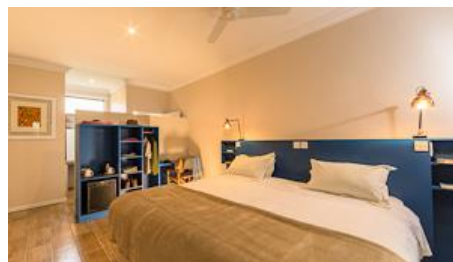
Includes: -

Distance/time: ±320km, 4h00 actual driving time. It's a relatively flat, straight road so with stops and lunch the total travel for the day is ±4h30.

Overnight: [Sedia Hotel](#) – standard twin rooms with en suite facilities. Swimming pool, bar, restaurant, telephone. Wifi available in public areas only. 



Sedia Hotel is managed by local citizens and employs 69 locals, of which more than half are women. The hotel supports various Maun based organisations through an impact fund, for example Sedie Junior Secondary School. The hotel also has a glass recycling project, and all its waste is separated according to type of waste for recycling purposes. The restaurant serves local Botswana beef, and Okavango bream.



Day 8 - 10 **MOREMI GAME RESERVE** [2x tented bush camp, 1x hotel Bx3, Lx3, Dx2]

Startling and unexpected contrasts are created as the waters of the Okavango flood into the drier Kalahari creating the magnificently rich wilderness area with amazing wildlife of the Moremi Game Reserve. Rivers, lagoons, savannah, woodland, Moremi offers some excellent game viewing. With over 400 species of birds, Moremi is also a great place to sight leopard, lion, wild dog, elephant, giraffe and a variety of antelope. We spend our time on game drives in Moremi GR and the surrounding concession along the Mababe River where the lagoons attract the thirsty animals to drink in the late afternoon.

Our tented bush camp is on a private concession east of Moremi, where we enjoy our meals while watching the animals drinking and enjoy the wilderness far from civilization.

On the morning of day 10 we have a game drive on the concession before heading back to our hotel in Maun.

Day 8, 9: Breakfast provided the lodge

Day 8, 9: Lunch provided by the tented bush camp

Day 8, 9: Dinner will be a set menu provided by the tented bush camp

Day 10: Breakfast will be provided by the tented bush camp

Day 10: Picnic lunch provided by the tented bush camp

Day 10: Dinner will be an own expense meal at a local restaurant

Includes:


Entrance fees to Moremi Game Reserve, morning & afternoon game drive in an open 4WD vehicle.

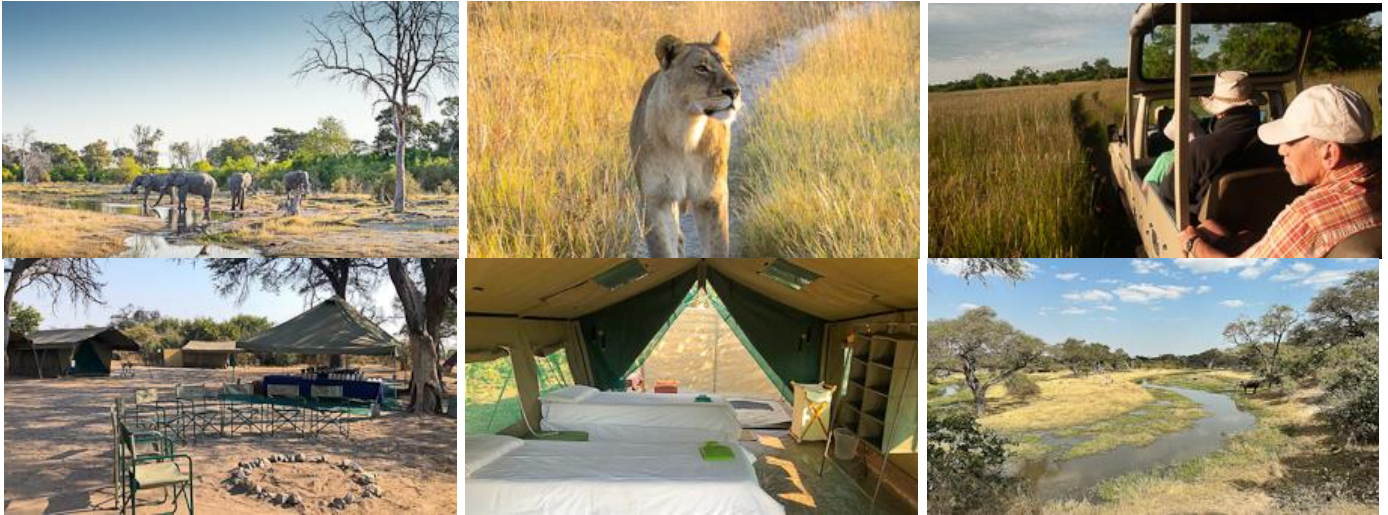
Distance/time:

±200km, 4h00 actual driving time but it's a game drive on sandy 4WD tracks so a full day of ±8h00 in the open 4WD.

Overnight:

2x nights remote & private tented bush camp – exclusive tented bush camp in a private concession area, bordering Moremi Game Reserve. Twin-share permanent tented camp with en-suite facilities. WiFi not available.

[Sedia Hotel](#) – standard twin rooms with en suite facilities. Swimming pool, bar, restaurant, telephone. Wifi available in public areas only. 




Day 11 - 12 OKAVANGO DELTA – SHAKAWE [lodge B - -]

We drive around the Okavango Delta, and north to our lodge on the banks of the Okavango Pan handle. From the lodge we'll explore the Okavango by mokoro and motor boat. Tranquil reed lined rivers, crystal clear water and abundant bird life. Time to rest, relax and enjoy the views of the Okavango Delta.

Day 11-12: Breakfast will be provided by the hotel/lodge

Day 11-12: Lunch will be own expense at the lodge

Day 11-12: Dinner will be own expense at the lodge

- Includes:** Okavango mokoro and motorboat excursions.
- Distance/time:** ±320km, 5h00 actual driving time, the tarmac road has a few potholes and going can be slow around the Delta and expect a total travel time of ±6h00 total.
- Overnight:** [Guma Lagoon](#) – twin en-suite canvas chalets. Swimming pool, bar, restaurant. Wifi available. 



Guma Lagoon is owner managed and employs 36 permanent staff and 50 mokoro polers from the local community. The camp sponsors 3 local schools with teaching equipment and mentors students into the guiding and hotel industry. They grow their own vegetables, recycling their kitchen waste for compost and use solar energy for 80% of their power.




Day 13 CAPRIVI [chalet B-D]

Crossing out of Botswana into Namibia and the Mahango Game Reserve. We game drive through the reserve to our lodge on the Kwando River. We spend our afternoon exploring on a river cruise.

Day 13: Breakfast provided by the lodge

Day 13: Lunch will be an own expense meal

Day 13: Dinner will be a set menu provided by the lodge

- Includes:** Mahangu NP entrance fee & game drive in the tour vehicle.
- Distance/time:** ±380km, 5h30 actual driving time, to at camp total travel time of ±6h00 total.
- Overnight:** [Camp Kwando](#) – twin share permanent tents with en-suite facilities. Swimming pool, bar, restaurant, telephone. No Wifi but there is mobile network. 



Day 14 **CHOBE NATIONAL PARK** [chalet B - -]

The Caprivi Strip, Zambezi Region, is a thin wedge of Namibia, which separates Botswana in the south and Angola in the north. We cross the Caprivi, back into Botswana at Ngoma and head to our lodge in the town of Kasane. The Chobe River attracts large herds of elephant as it flows lazily along the northern boundary of the Chobe National Park. Our final afternoon is spent on arguably the best wildlife activity in Southern Africa, the game-viewing cruise. See herds of elephants, large crocodiles, pods of hippo and other wildlife as they quench their thirst at the end of the day. The magnificent river sunset is a photographer's dream.

Day 14: Breakfast will be provided by the lodge

Day 14: Lunch will be an own expense meal

Day 14: Dinner will be an own expense meal

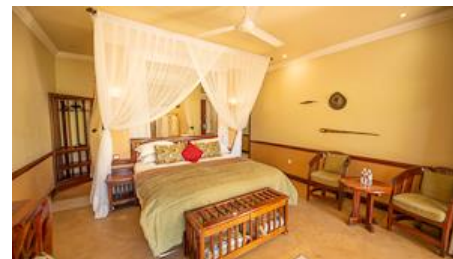
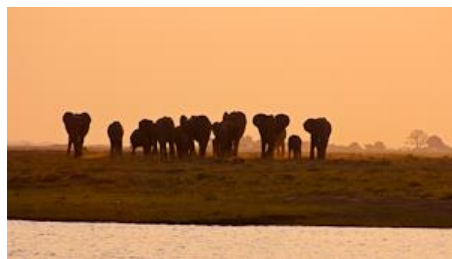
Includes: Chobe N.P entrance fees & sunset cruise on Chobe River.

Distance/time: ±260km, 3h30 actual driving time, we look out for game as we head for a border crossing and a lunch stop total travel time ±6h00 total.

Overnight: [Chobe Safari Lodge](#) – twin chalets with en suite facilities. Swimming pool, bar, restaurant, telephone. Alternative Chobe Bush Lodge. Wifi available.



Chobe Safari & Bush Lodge is Motswana owned and all 260+ staff are employed from the local community. The lodge supports the local community as far as possible in, employment, purchasing food locally, and assisting in looking after 31 children from Kachilauw Primary School, a school for special needs children.



Day 15 **VICTORIA FALLS ZIMBABWE – TOUR ENDS** [- B - -]

Enjoy an optional early morning game drive (own expense) before our last breakfast together. We bid a sad farewell before we embark on a road shuttle transfer to either Kasane airport in Botswana, or Victoria Falls airport in Zimbabwe, in time for midday flight departures. Our tour ends at 10:00am.

Day 15: Breakfast will be provided by the lodge

Day 15: Lunch own expense

Day 15: Dinner not included

Includes: Transfer to either Kasane airport BBK (Botswana), or Victoria Falls airport VFA (Zimbabwe) or the town of Victoria Falls (Zimbabwe).

Distance/time: ±85km, 1h30 actual driving time. It's not a long way, but the border can be busy and slow so we anticipate a total travel day of ±3h00.

Optional Activities: Chobe National Park morning game drive.

Overnight: N/A

Please Note:

The distance and travel times quoted above are an estimate only, and subject to local road conditions and animal sightings!

Please note:

For bookings contact: info@africantravels.com | www.africantravels.com and receive a free WakaWaka Power+ solar charger

That the accommodation specified above and in the itinerary, is a guide only and is subject to availability. Alternatives will be of a similar standard, and accommodation changes will be made without notice.

Sustainable Tourism:

Botswanan conservation lands surrounding the national parks are leased by the government to tourism businesses for the benefit of the local communities. The lodge we use outside Moremi not only employs staff from the local village but also contributes financially towards the community trust. The village board use that income for the betterment of the local people. The lease environmental management plan is for the benefit of conservation of the region.

2024 PRICES AND DEPARTURE DATES:

RACK Price: (valid Jan 2024 – Dec 2024)

BZac15 € 4 350 pps

Single supplement: € 980 pp Due to the group size and the lodge room allocations, if you are travelling on your own there is a price supplement

2024 DEPARTURE DATES

Departs	Ends	
VICTORIA FALLS Sunday at 14:00pm	VICTORIA FALLS Sunday at 10:00am	
03-Mar-24 24-Mar-24	17-Mar-24 07-Apr-24	German
14-Apr-24 16-Jun-24 07-Jul-24	28-Apr-24 30-Jun-24 21-Jul-24	German
21-Jul-24 11-Aug-24 08-Sep-24 29-Sep-24 13-Oct-24	04-Aug-24 25-Aug-24 22-Sep-24 13-Oct-24 27-Oct-24	German German
03-Nov-24 10-Nov-24 08-Dec-24	17-Nov-24 24-Nov-24 22-Dec-24	German



* **Bold dates** are guaranteed departures; all other dates are guaranteed from 4 clients.

* **German:** These tours have a German speaking translator/tour leader

DETAILED TOUR INFORMATION:

In a nutshell

- A true African experience - wild and free!
- All inclusive trip with cultural experience, adventure and wildlife.
- Matopos National Park, Hwange National Park, Victoria Falls, Moremi Game Reserve, Mahangu Game Reserve, Chobe National Park & the Okavango Delta.

Why travel with Sunway Safaris

We understand that there are several options available to you when choosing your African safari. We also know that you want to make the most informed decision about your safari, what you get, what's included and what you see and experience. So these are just a few of the Sunway qualities and facts:

- **Small groups** – by travelling with a maximum of 12 people, you can witness Africa and have first-hand contact with this amazing continent and its people without being a negative influence. This has been a key factor in our continued success. Our trips appeal to a wide demographic of traveller. Our clients range in age from 25 to 65+ with the average being 45. The range of travellers gives a variety of perspectives which adds to the experience of each safari.
- **2 Sunway tour guides** – group leaders are the key to any safari. On a Sunway safari you will travel with 2 qualified and registered field guides (Field Guides Association of SA). Two guides as crew, not a guide and a driver, means interesting trips with maximum knowledge and information. Our guides have a passion for Africa, her people and wildlife, and they love nothing more than sharing their knowledge with you.
- **Guaranteed departures** – departure dates on each itinerary shown as bold are guaranteed departure dates. All other departures operate with a minimum of 4 clients.
- **All-inclusive price** – when we travel ourselves, we always feel that if we're in a country we should find and see the best it has to offer. So when planning the Sunway routes, we ensure that each trip provides the best inclusions and experiences. For example, if you go to Botswana – you have to visit the national parks in an open 4WD – it is the essence of the Botswana wilderness. If you tour Zambia, then you must visit South Luangwa NP and do a game walk with a local scout. When booking on a Sunway Safari there are no hidden costs. All of the entrance fees are included, and a wide range of activities, and most meals. We have included many highlights in our tours, so that you will see and experience the highlights without having to pay extra when you get there. So when you decide on which safari company to book with, look

For bookings contact: info@africantravels.com | www.africantravels.com and receive a free WakaWaka Power+ solar charger

carefully at what you're actually getting. You may only visit a place once, make sure you get the most out of it.

- **Safety** – our fleet of vehicles are custom built to ensure comfortable and safe touring. Each is constructed, by an authorised passenger vehicle builder, to the latest safety requirements, with a safety shell, and every seat has a lap belt. This gives you peace of mind when travelling with Sunway Safaris on the often demanding African roads.
- **Good2Go** - Our commitment to sustainable & responsible tourism is reflected in our low impact travel style where all we take is photographs and all we leave is our footprints. Being an African company, we have the grassroots contacts to make a real difference in the lives of the people whose lands we visit. On each itinerary in the brochure you'll find this symbol which highlights just one of the sustainable travel initiatives that we support.
- **Solo Travellers** – going it alone won't make your holiday more expensive; our reservations staff will match you up with another same-gender traveller to keep your holiday affordable. If however you request a single room or tent these are available, with a price supplement
- **Experience** - we have more than 28 years' experience planning tours throughout Southern Africa. As such, our itineraries and routes have been perfected over many years ensuring that your tour will run smoothly. We visit the highlights of Southern Africa but ensure that you do not follow the well-trodden tourist track. All of us at Sunway Safaris have extensive travel experience in Africa, and throughout the world. Being adventure travellers ourselves, we know how to plan trips that give you a broad experience of the countries that you will visit.
- **Based in Africa** - probably the most important part of a Sunway safari is that we are an African company with offices in South Africa and Botswana. We live in Africa, we travel in Africa and it is our passion for this amazing continent that makes Sunway your best travel option.
- **Age Policy** - On all scheduled tours, we accept children 12-17 with accompanying adult. We have no upper age limit. Clients older than 65 years of age at the time of travel require a medical certificate stating the client is fit and healthy to join an adventure travel group tour. We have many clients over 65 years of age, who are perfectly capable of enjoying every aspect of a Sunway tour, both accommodated and camping. For more details contact marketing@sunway-safaris.com.



SOS trees project – Okavango Botswana

- For hundreds of years, the local communities in and around Botswana's Okavango Delta have used the wood of the sausage tree to craft their traditional mokoro (dugout canoes). The knowledge and skill have been passed down from generation to generation and, up until recently, has been a sustainable practice. With increasing numbers of people visiting the Delta each year, more mokoro are needed and as a direct result, more and more sausage trees are being felled and the sausage tree is sadly disappearing from the region. A traditional wooden mokoro will have to be replaced every five years, thereby placing increased pressure on the dwindling sausage tree supply.

Sunway Safaris has established a project to encourage polers in the local communities to buy replica fiberglass mokoro's, which have a lifespan of approximately ten years, are more stable and are produced without any negative affect to the environment. As such, sponsorship for each fiberglass mokoro is needed, and a portion of the tour cost will be donated to the project, but we also will offer our clients the opportunity to contribute to this worthwhile cause. Please feel free to contact the Sunway Safaris office for more information on the SOS Trees project or if you would like to make any contributions towards this project. It is something that is close to all of our hearts and we hope that it will be successful.

Local Payment

A local payment is not required on this safari.

Recommended reading

Before you travel you might want to read any of the following books. While not specific to the Sunway tour you will join, they do provide some background understanding of the countries you will be visiting.

- A Falcon Flies by Wilbur Smith (Fictional story of life in pre-colonial Rhodesia / Zimbabwe)
- Wankie by Davidson Ted (a story about Hwange National Park)
- Selous Scouts Top Secret War by Ron Reid-Daly (an account of the Zimbabwe War of Independence)
- How I Found Livingstone by Henry M. Stanley (a factual account of Stanley's travels in Africa)
- #1 Ladies Detective Agency by Alexander McCall Smith (Fictional story of life in Botswana)
- Trees of the Okavango by Veronica Roodt (A reference book with traditional uses and myths)
- Okavango: Jewel of the Kalahari by Karen Ross (A comprehensive description of the Delta ecology)
- Don't run whatever You Do by Peter Allison (A guide's perspective of Botswana lodge life)
- Okavango: Africa's Last Eden by Frans Lanting (A coffee table book of photography)
- Newman's Birds of Southern Africa by Kenneth Newman
- Sasol Birds of Southern Africa by Ian Sinclair, Phil Hockey, and W.R. Tarboton
- The Safari Companion: A Guide to Watching African Mammals Including Hoofed Mammals, Carnivores, and Primates by Richard D. Estes and Daniel Otte

For bookings contact: info@africantravels.com | www.africantravels.com and receive a free WakaWaka Power+ solar charger

- Field Guide to Trees of Southern Africa (Field Guides) by Braam Van Wyk, Keith Coates Palgrav, and Piet Van Wyk

Shopping

- Craft shopping for carvings, batiks, paintings and clothing is best in Victoria Falls which has a wide variety of curios. Botswana has beautiful grass weavings but these are available mostly at curio shops as there are hardly any craft markets in Botswana.

Food

- The majority of meals on this safari are provided by the lodges.
- We do cater for special dietary requirements (e.g. vegetarian or allergies.)
- All beverages will be for your own expense. We will not supply bottled drinking water although it is available at many shops on tour.

Difficulty

- Anyone who is generally active and in good health should enjoy this trip.
- Full itinerary with a couple of long driving days. The road conditions through the wilderness areas are very poor and our progress can at times be slow and dusty. Remember to hold on at all times and enjoy the ride!

Things you should know

- Includes park entrances, game drives and the Okavango Delta excursion.
- As this tour spends a large amount of time in wildlife areas it is essential that clients adhere to the tour leaders (and local guides) instructions regarding interaction with wildlife, camp safety and game walk/drive rules.
- Your client will need a valid passport and visas for entry into Zimbabwe, and Botswana and re-entering South Africa.
- Luggage, please pack to a limit of 12kgs in a soft sports tog bag. Also bring daypack for walks and keeping in the vehicle. On the Accommodated Adventures & Classic Journeys, all bedding is provided, and you will not be required to bring a sleeping bag or pillow. At most accommodation establishments, towels will be provided, but it is always a good idea to bring a small travel towel for the beach or swimming pool. If you are traveling on a tour that visits the Okavango Delta please make sure to bring a small towel with you as there are no towels supplied.
- We recommend that you bring Euro or US\$ for personal expenses on this trip but please note that foreign currency will need to be changed into Botswana Pula as shops, restaurants and market vendors only accept BWP. Expenses in Victoria Falls can be paid in US\$ and major credit cards can also be used for optional activities. See the Sunway tour dossier for approximate costs of drinks and meals etc.

Common questions about this trip

1. **Can I buy camera memory cards?** Memory cards and other photographic accessories will be available several times on tour. A camera with a zoom lens from wide angle to telephoto, 35-300mm, is advisable to capture both scenic and wildlife shots. Each vehicle is fitted with a 12/220V inverter – this can be used while the vehicle is running (but will drain the vehicle battery if left plugged in), so this should only be relied on for limited charging of camera batteries and we recommend you bring a 2nd battery. Remember you can also charge your camera at all the accommodation.
2. **Is it safe?** Zimbabwe has been involved in a political power struggle over the past few years, and this has deterred tourists from travelling to the country. Having said this, the Zimbabwe people are always friendly and helpful to visitors to their country and tourists are welcome with open arms. Botswana is safe and your guide knows both countries intimately and will endeavor to show you the best parts while looking after you. In the wild areas your guide will brief you on the necessary precautions, follow this advice and you will be fine. Be aware of your personal belongings and you will have a great trip!
3. **Do I need malaria tablets?** Yes, the trip passes through malaria areas and prophylactics are recommended.
4. **What do I need to bring?** All details are covered in our general tour briefing (available from www.sunway-safaris.com home page) but the basics are: - comfortable clothes for warm days and cool evenings, walking shoes, flash light, a raincoat, hat and sunglasses, swimsuit, a small pair of binoculars also comes in very handy and most importantly - a sense of adventure!

